

For Research Use Only

Glutamate receptor 2 Polyclonal antibody, PBS Only

Catalog Number: 11994-1-PBS



Basic Information

| | | |
|--|---|--|
| Catalog Number: 11994-1-PBS | GenBank Accession Number: BC010574 | Purification Method: Antigen affinity purification |
| Size: 100ug, Concentration: 1 mg/ml by Nanodrop; | GeneID (NCBI): 2891 | |
| Source: Rabbit | UNIPROT ID: P42262 | |
| Isotype: IgG | Full Name: glutamate receptor, ionotropic, AMPA 2 | |
| Immunogen Catalog Number: AG2662 | Calculated MW: 883 aa, 99 kDa | |
| | Observed MW: 94-105 kDa | |

Applications

Tested Applications:
WB, IHC, IF-P, IP, Indirect ELISA

Species Specificity:
human, mouse, rat

Background Information

Glutamate receptors are the predominant excitatory neurotransmitter receptors in the mammalian brain and are activated in a variety of normal neurophysiologic processes. GRIA2 (glutamate receptor 2, GluR-2) belongs to a family of glutamate receptors that are sensitive to alpha-amino-3-hydroxy-5-methyl-4-isoxazole propionate (AMPA), and function as ligand-activated cation channels that mediate the fast component of excitatory postsynaptic currents in neurons of the central nervous system. These channels are assembled from 4 related subunits, GRIA1-4. The presence of GRIA2 in the heteromeric AMPA receptors impermeabilizes it to calcium, preventing possible calcium-mediated toxicity.

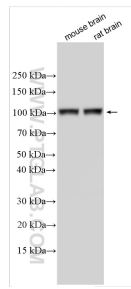
Storage

Storage:
Store at -80°C.
Storage Buffer:
PBS only, pH7.3

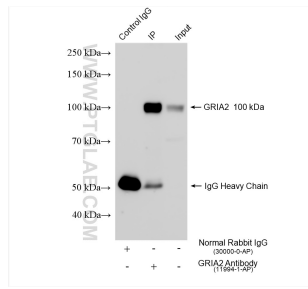
For technical support and original validation data for this product please contact:
T: 1 (888) 4PTGLAB (1-888-478-4522) (toll free in USA), or 1(312) 455-8498 (outside USA) E: proteintech@ptglab.com
W: ptglab.com

This product is exclusively available under Proteintech Group brand and is not available to purchase from any other manufacturer.

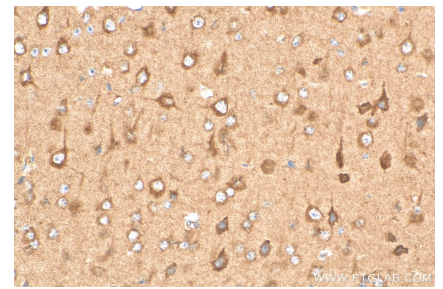
Selected Validation Data



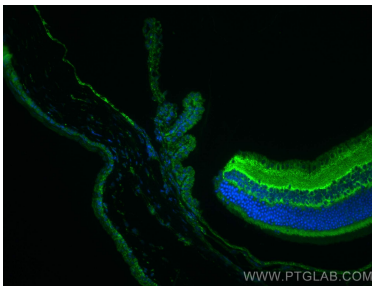
Various lysates were subjected to SDS PAGE followed by western blot with 11994-1-AP (Glutamate receptor 2 antibody) at dilution of 1:20000 incubated at room temperature for 1.5 hours. This data was developed using the same antibody clone with 11994-1-PBS in a different storage buffer formulation.



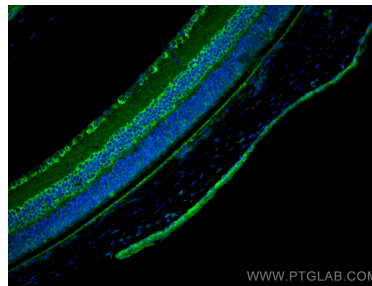
IP result of anti-Glutamate receptor 2 (IP:11994-1-AP, 4ug; Detection:11994-1-AP 1:2000) with mouse brain tissue lysate 2100 ug. This data was developed using the same antibody clone with 11994-1-PBS in a different storage buffer formulation.



Immunohistochemical analysis of paraffin-embedded mouse brain tissue slide using 11994-1-AP (Glutamate receptor 2 antibody) at dilution of 1:200 (under 40x lens). Heat mediated antigen retrieval with Tris-EDTA buffer (pH 9.0). This data was developed using the same antibody clone with 11994-1-PBS in a different storage buffer formulation.



Immunofluorescent analysis of (4% PFA) fixed mouse eye tissue using Glutamate receptor 2 antibody (11994-1-AP) at dilution of 1:200 and CoraLite@488-Conjugated AffiniPure Goat Anti-Rabbit IgG(H+L). This data was developed using the same antibody clone with 11994-1-PBS in a different storage buffer formulation.



Immunofluorescent analysis of (4% PFA) fixed paraffin-embedded mouse eye tissue using Glutamate receptor 2 antibody (11994-1-AP) at dilution of 1:400 and CoraLite@488-Conjugated AffiniPure Goat Anti-Rabbit IgG(H+L) (SA00013-2). Heat mediated antigen retrieval with Tris-EDTA buffer (pH 9.0). This data was developed using the same antibody clone with 11994-1-PBS in a different storage buffer formulation.