

For Research Use Only

PRCC Polyclonal antibody

Catalog Number:12019-1-AP



Basic Information

Catalog Number:

12019-1-AP

Size:

150ul , Concentration: 450 ug/ml by Nanodrop and 240 ug/ml by Bradford method using BSA as the standard;

Source:

Rabbit

Isotype:

IgG

Immunogen Catalog Number:

AG2638

GenBank Accession Number:

BC010450

GeneID (NCBI):

5546

UNIPROT ID:

Q92733

Full Name:

papillary renal cell carcinoma (translocation-associated)

Calculated MW:

491 aa, 52 kDa

Observed MW:

66 kDa

Purification Method:

Antigen affinity purification

Recommended Dilutions:

WB 1:500-1:1000

Applications

Tested Applications:

WB, ELISA

Species Specificity:

human

Positive Controls:

WB : HeLa cells,

Background Information

PRCC, also named as, TPRC, regulate cell cycle progression through interaction with MAD2L2. It is frequently found in papillary renal cell carcinoma. Endogenous PRCC is coimmunoprecipitated by antibodies that recognize a variety of pre-mRNA splicing factors including SC35, PRL1 and CDC5.

Storage

Storage:

Store at -20°C. Stable for one year after shipment.

Storage Buffer:

PBS with 0.02% sodium azide and 50% glycerol pH 7.3.

Aliquoting is unnecessary for -20°C storage

*** 20ul sizes contain 0.1% BSA

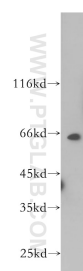
For technical support and original validation data for this product please contact:

T: 1 (888) 4PTGLAB (1-888-478-4522) (toll free in USA), or 1(312) 455-8498 (outside USA)

E: proteintech@ptglab.com
W: ptglab.com

This product is exclusively available under Proteintech Group brand and is not available to purchase from any other manufacturer.

Selected Validation Data



HeLa cells were subjected to SDS PAGE followed by western blot with 12019-1-AP (PRCC antibody) at dilution of 1:500 incubated at room temperature for 1.5 hours.