

For Research Use Only

TBCE Polyclonal antibody

Catalog Number: 12021-1-AP

Featured Product

3 Publications



Basic Information

Catalog Number: 12021-1-AP	GenBank Accession Number: BC008654	Purification Method: Antigen affinity purification
Size: 150ul , Concentration: 1000 µg/ml by Nanodrop and 333 µg/ml by Bradford method using BSA as the standard;	GeneID (NCBI): 6905	Recommended Dilutions: WB 1:1000-1:5000 IHC 1:50-1:500
Source: Rabbit	Full Name: tubulin folding cofactor E	
Isotype: IgG	Calculated MW: 527 aa, 59 kDa	
Immunogen Catalog Number: AG2650	Observed MW: 59 kDa	

Applications

Tested Applications: IHC, WB, ELISA	Positive Controls: WB : HEK-293 cells, HeLa cells, K-562 cells
Cited Applications: IF, IHC, WB	IHC : human prostate cancer tissue,
Species Specificity: human, mouse, rat	
Cited Species: human, mouse	

Note-IHC: suggested antigen retrieval with TE buffer pH 9.0; (*) Alternatively, antigen retrieval may be performed with citrate buffer pH 6.0

Background Information

Notable Publications

Author	Pubmed ID	Journal	Application
Lukas Juergens	32712744	Histochem Cell Biol	IF
Rak Kristen K	24120439	Exp Neurol	IHC
Biernacki Melinda A MA	20103624	Cancer Res	WB

Storage

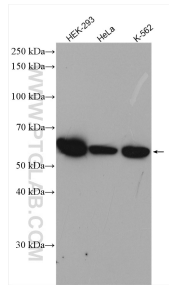
Storage:
Store at -20°C. Stable for one year after shipment.
Storage Buffer:
PBS with 0.02% sodium azide and 50% glycerol pH 7.3.
Aliquoting is unnecessary for -20°C storage

*** 20ul sizes contain 0.1% BSA

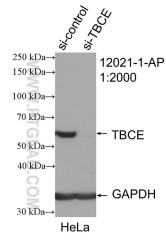
For technical support and original validation data for this product please contact:
T: 1 (888) 4PTGLAB (1-888-478-4522) (toll free in USA), or 1(312) 455-8498 (outside USA)
E: proteintech@ptglab.com
W: ptglab.com

This product is exclusively available under Proteintech Group brand and is not available to purchase from any other manufacturer.

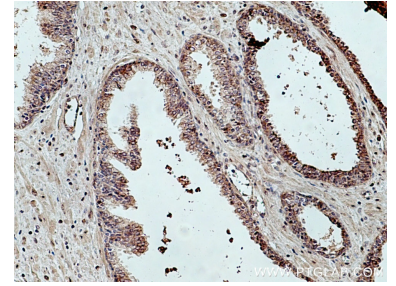
Selected Validation Data



Various lysates were subjected to SDS PAGE followed by western blot with 12021-1-AP (TBCE antibody) at dilution of 1:4000 incubated at room temperature for 1.5 hours.



WB result of TBCE antibody (12021-1-AP; 1:2000; incubated at room temperature for 1.5 hours) with sh-Control and sh-TBCE transfected HeLa cells.



Immunohistochemical analysis of paraffin-embedded human prostate cancer tissue slide using 12021-1-AP (TBCE antibody) at dilution of 1:200 (under 10x lens). Heat mediated antigen retrieval with Tris-EDTA buffer (pH 9.0).