

For Research Use Only

POP1 Polyclonal antibody

Catalog Number: 12029-1-AP

Featured Product

8 Publications



Basic Information

Catalog Number:

12029-1-AP

Size:

150ul, Concentration: 650 ug/ml by Nanodrop;

Source:

Rabbit

Isotype:

IgG

Immunogen Catalog Number:

AG2660

GenBank Accession Number:

BC011529

GeneID (NCBI):

10940

UNIPROT ID:

Q99575

Full Name:

processing of precursor 1, ribonuclease P/MRP subunit (S. cerevisiae)

Calculated MW:

1024 aa, 115 kDa

Observed MW:

115 kDa

Purification Method:

Antigen affinity purification

Recommended Dilutions:

WB 1:2000-1:16000

IP 0.5-4.0 ug for 1.0-3.0 mg of total protein lysate

IHC 1:400-1:1600

IF/ICC 1:50-1:500

Applications

Tested Applications:

WB, IHC, IF/ICC, IP, ELISA

Cited Applications:

WB, IHC, IP, RIP

Species Specificity:

human, mouse, rat

Cited Species:

human

Positive Controls:

WB : HeLa cells, HepG2 cells

IP : HeLa cells,

IHC : human ovary cancer tissue,

IF/ICC : HepG2 cells,

Note-IHC: suggested antigen retrieval with TE buffer pH 9.0; (*) Alternatively, antigen retrieval may be performed with citrate buffer pH 6.0

Background Information

Processing of Precursor 1 (POP1), a core component of RNase subunits, is an autoantigen in patients with connective tissue disease and is involved in suppressing inflammation.

Notable Publications

Author	Pubmed ID	Journal	Application
Sung Ho Boo	36070699	Cell Rep	IP, WB
Ok Hyun Park	30930054	Mol Cell	WB
Sung Ho Boo	35613594	Cell Rep	WB

Storage

Storage:

Store at -20°C. Stable for one year after shipment.

Storage Buffer:

PBS with 0.02% sodium azide and 50% glycerol, pH7.3

Aliquoting is unnecessary for -20°C storage

*** 20ul sizes contain 0.1% BSA

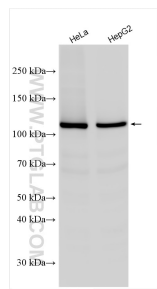
For technical support and original validation data for this product please contact:

T: 1 (888) 4PTGLAB (1-888-478-4522) (toll free in USA), or 1(312) 455-8498 (outside USA)

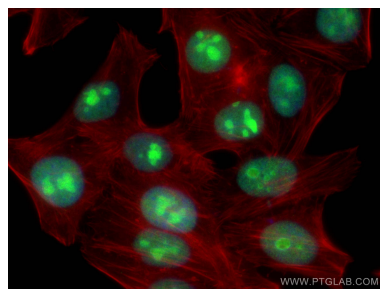
E: proteintech@ptglab.com
W: ptglab.com

This product is exclusively available under Proteintech Group brand and is not available to purchase from any other manufacturer.

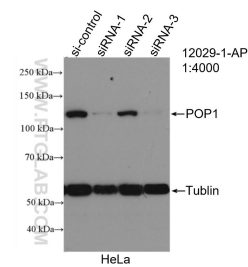
Selected Validation Data



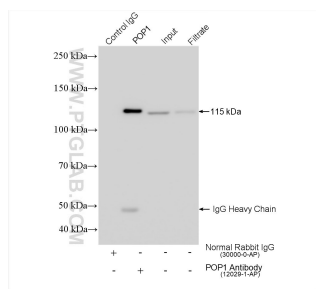
Various lysates were subjected to SDS PAGE followed by western blot with 12029-1-AP (POP1 antibody) at dilution of 1:8000 incubated at room temperature for 1.5 hours.



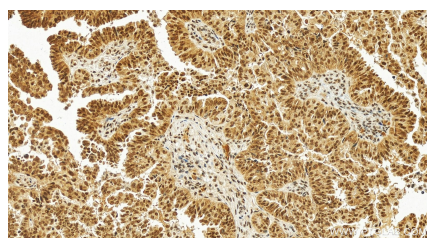
Immunofluorescent analysis of (4% PFA) fixed HepG2 cells using POP1 antibody (12029-1-AP) at dilution of 1:200 and CoralLite®488-Conjugated AffiniPure Goat Anti-Rabbit IgG(H+L), CL594-Phalloidin (red).



WB result of POP1 antibody (12029-1-AP; 1:4000; incubated at room temperature for 1.5 hours) with sh-Control and sh-POP1 transfected HeLa cells.



IP result of anti-POP1 (IP:12029-1-AP, 4ug; Detection:12029-1-AP 1:8000) with HeLa cells lysate 1560 ug.



Immunohistochemical analysis of paraffin-embedded human ovary cancer tissue slide using 12029-1-AP (POP1 antibody) at dilution of 1:800 (under 20x lens). Heat mediated antigen retrieval with Tris-EDTA buffer (pH 9.0).