

For Research Use Only

POP1 Polyclonal antibody, PBS Only

Catalog Number: 12029-1-PBS

Featured Product



Basic Information

Catalog Number:

12029-1-PBS

Size:

100ug, Concentration: 1 mg/ml by Nanodrop;

Source:

Rabbit

Isotype:

IgG

Immunogen Catalog Number:

AG2660

GenBank Accession Number:

BC011529

GeneID (NCBI):

10940

UNIPROT ID:

Q99575

Full Name:

processing of precursor 1, ribonuclease P/MRP subunit (S. cerevisiae)

Calculated MW:

1024 aa, 115 kDa

Observed MW:

115 kDa

Purification Method:

Antigen affinity purification

Applications

Tested Applications:

WB, IHC, IF/ICC, IP, Indirect ELISA

Species Specificity:

human, mouse, rat

Background Information

Processing of Precursor 1 (POP1), a core component of RNase subunits, is an autoantigen in patients with connective tissue disease and is involved in suppressing inflammation.

Storage

Storage:

Store at -80°C.

Storage Buffer:

PBS only, pH7.3

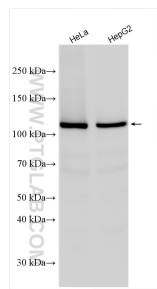
For technical support and original validation data for this product please contact:

T: 1 (888) 4PTGLAB (1-888-478-4522) (toll free in USA), or 1(312) 455-8498 (outside USA)

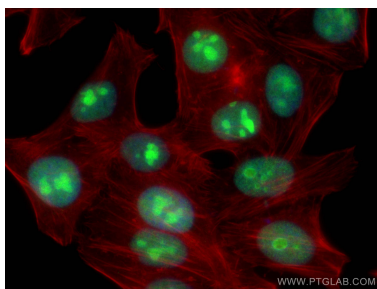
E: proteintech@ptglab.com
W: ptglab.com

This product is exclusively available under Proteintech Group brand and is not available to purchase from any other manufacturer.

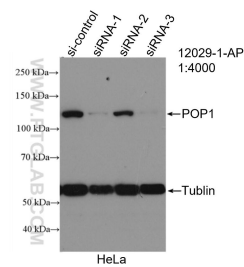
Selected Validation Data



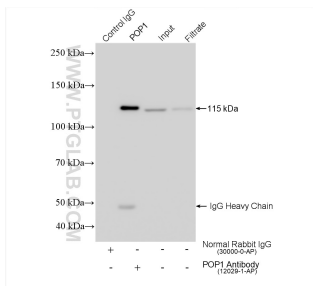
Various lysates were subjected to SDS PAGE followed by western blot with 12029-1-AP (POP1 antibody) at dilution of 1:8000 incubated at room temperature for 1.5 hours. This data was developed using the same antibody clone with 12029-1-PBS in a different storage buffer formulation.



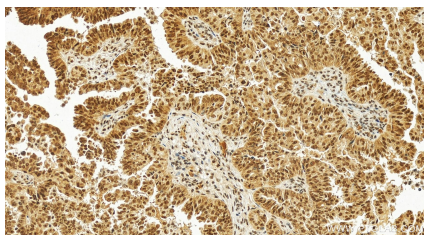
Immunofluorescent analysis of (4% PFA) fixed HepG2 cells using POP1 antibody (12029-1-AP) at dilution of 1:200 and CoralLite®488-Conjugated AffiniPure Goat Anti-Rabbit IgG(H+L), CL594-Phalloidin (red). This data was developed using the same antibody clone with 12029-1-PBS in a different storage buffer formulation.



WB result of POP1 antibody (12029-1-AP; 1:4000; incubated at room temperature for 1.5 hours) with sh-Control and sh-POP1 transfected HeLa cells. This data was developed using the same antibody clone with 12029-1-PBS in a different storage buffer formulation.



IP result of anti-POP1 (IP:12029-1-AP, 4ug; Detection:12029-1-AP 1:8000) with HeLa cells lysate 1560 ug. This data was developed using the same antibody clone with 12029-1-PBS in a different storage buffer formulation.



Immunohistochemical analysis of paraffin-embedded human ovary cancer tissue slide using 12029-1-AP (POP1 antibody) at dilution of 1:800 (under 20x lens). Heat mediated antigen retrieval with Tris-EDTA buffer (pH 9.0). This data was developed using the same antibody clone with 12029-1-PBS in a different storage buffer formulation.