

For Research Use Only

WBP2 Polyclonal antibody

Catalog Number: 12030-1-AP

Featured Product

7 Publications



Basic Information

Catalog Number:

12030-1-AP

Size:

150ul, Concentration: 800 ug/ml by Nanodrop and 460 ug/ml by Bradford method using BSA as the standard;

Source:

Rabbit

Isotype:

IgG

Immunogen Catalog Number:

AG2661

GenBank Accession Number:

BC010616

GeneID (NCBI):

23558

UNIPROT ID:

Q969T9

Full Name:

WW domain binding protein 2

Calculated MW:

261 aa, 28 kDa

Observed MW:

30-40 kDa

Purification Method:

Antigen affinity purification

Recommended Dilutions:

WB 1:500-1:1000

IP 0.5-4.0 ug for 1.0-3.0 mg of total protein lysate

IHC 1:50-1:500

IF/ICC 1:200-1:800

Applications

Tested Applications:

WB, IHC, IF/ICC, IP, ELISA

Cited Applications:

WB, IHC, IF

Species Specificity:

human, mouse, rat

Cited Species:

human, mouse, rat, zebrafish

Note-IHC: suggested antigen retrieval with TE buffer pH 9.0; (*) Alternatively, antigen retrieval may be performed with citrate buffer pH 6.0

Positive Controls:

WB: A375 cells, HEK-293 cells, MCF-7 cells, MDA-MB-453s cells

IP: A375 cells,

IHC: mouse testis tissue, human breast cancer tissue, human gliomas tissue

IF/ICC: A375 cells,

Notable Publications

Author	Pubmed ID	Journal	Application
Natania S Field	32459862	Eur J Immunol	WB
Zhe Zheng	33658485	Cell Death Dis	WB, IF
Xuehui Wang	35236829	Cell Death Discov	WB, IHC

Storage

Storage:

Store at -20°C. Stable for one year after shipment.

Storage Buffer:

PBS with 0.02% sodium azide and 50% glycerol pH 7.3.

Aliquoting is unnecessary for -20°C storage

*** 20ul sizes contain 0.1% BSA

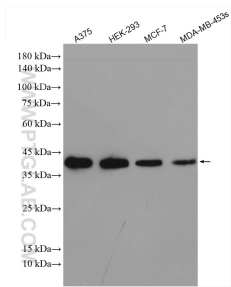
For technical support and original validation data for this product please contact:

T: 1 (888) 4PTGLAB (1-888-478-4522) (toll free in USA), or 1(312) 455-8498 (outside USA)

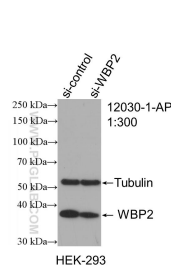
E: proteintech@ptglab.com
W: ptglab.com

This product is exclusively available under Proteintech Group brand and is not available to purchase from any other manufacturer.

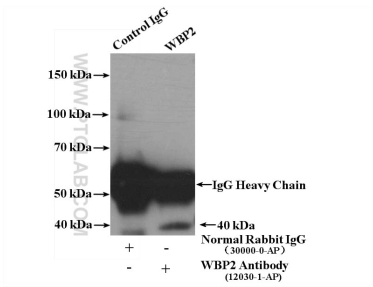
Selected Validation Data



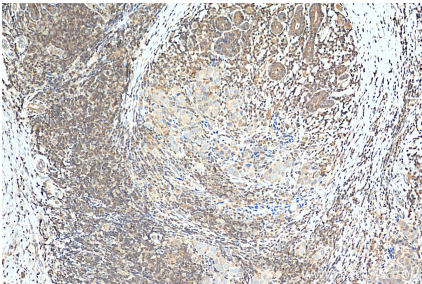
Various lysates were subjected to SDS PAGE followed by western blot with 12030-1-AP (WBP2 antibody) at dilution of 1:500 incubated at room temperature for 1.5 hours.



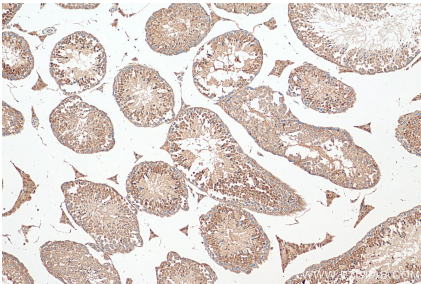
WB result of WBP2 antibody (12030-1-AP; 1:300; incubated at room temperature for 1.5 hours) with sh-Control and sh-WBP2 transfected HEK-293 cells.



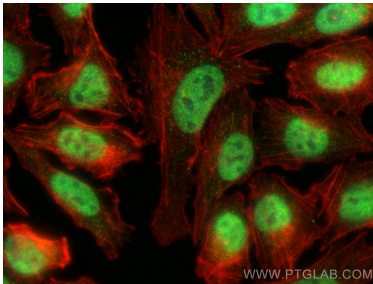
IP result of anti-WBP2 (IP:12030-1-AP, 4ug; Detection:12030-1-AP 1:300) with A375 cells lysate 3600 ug.



Immunohistochemical analysis of paraffin-embedded human breast cancer tissue slide using 12030-1-AP (WBP2 antibody) at dilution of 1:200 (under 10x lens). Heat mediated antigen retrieval with Tris-EDTA buffer (pH 9.0).



Immunohistochemical analysis of paraffin-embedded mouse testis tissue slide using 12030-1-AP (WBP2 antibody) at dilution of 1:200 (under 10x lens). Heat mediated antigen retrieval with Tris-EDTA buffer (pH 9.0).



Immunofluorescent analysis of (4% PFA) fixed A375 cells using WBP2 antibody (12030-1-AP) at dilution of 1:400 and CoraLite@488-Conjugated Goat Anti-Rabbit IgG(H+L) (SA00013-2), CL594-phalloidin (red).