

For Research Use Only

# KIF12 Polyclonal antibody

Catalog Number: 12035-1-AP **5 Publications**



## Basic Information

<b>Catalog Number:</b> 12035-1-AP	<b>GenBank Accession Number:</b> BC010626	<b>Purification Method:</b> Antigen affinity purification
<b>Size:</b> 150ul , Concentration: 500 µg/ml by Nanodrop;	<b>GeneID (NCBI):</b> 113220	<b>Recommended Dilutions:</b> WB 1:1000-1:5000 IHC 1:20-1:200
<b>Source:</b> Rabbit	<b>Full Name:</b> kinesin family member 12	
<b>Isotype:</b> IgG	<b>Calculated MW:</b> 646 aa, 71 kDa	
<b>Immunogen Catalog Number:</b> AG2707	<b>Observed MW:</b> 55-70 kDa	

## Applications

<b>Tested Applications:</b> IHC, WB, ELISA	<b>Positive Controls:</b>
<b>Cited Applications:</b> IF, IHC, WB	<b>WB :</b> mouse liver tissue, Y79 cells, rat kidney tissue, rat pancreas tissue
<b>Species Specificity:</b> human, mouse, rat	<b>IHC :</b> human kidney tissue, human pancreas cancer tissue, human renal cell carcinoma tissue
<b>Cited Species:</b> human, mouse	

**Note-IHC: suggested antigen retrieval with TE buffer pH 9.0; (\*) Alternatively, antigen retrieval may be performed with citrate buffer pH 6.0**

## Background Information

### Notable Publications

Author	Pubmed ID	Journal	Application
Stalke Amelie	34555379	J Pediatr	WB,IF
Rik Westland	26352300	Kidney Int	IF
Prunotto Marco M	23376485	J Proteomics	IHC

## Storage

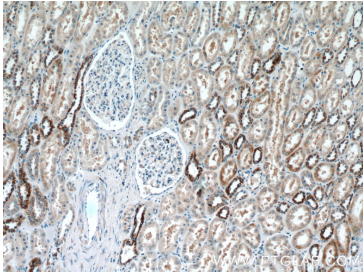
**Storage:**  
Store at -20°C. Stable for one year after shipment.  
**Storage Buffer:**  
PBS with 0.02% sodium azide and 50% glycerol pH 7.3.  
Aliquoting is unnecessary for -20°C storage

\*\*\* 20ul sizes contain 0.1% BSA

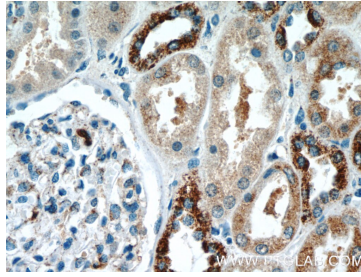
For technical support and original validation data for this product please contact:  
T: 1 (888) 4PTGLAB (1-888-478-4522) (toll free in USA), or 1(312) 455-8498 (outside USA)  
E: proteintech@ptglab.com  
W: ptglab.com

This product is exclusively available under Proteintech Group brand and is not available to purchase from any other manufacturer.

## Selected Validation Data



Immunohistochemical analysis of paraffin-embedded human kidney tissue slide using 12035-1-AP (KIF12 Antibody) at dilution of 1:50 (under 10x lens).



Immunohistochemical analysis of paraffin-embedded human kidney tissue slide using 12035-1-AP (KIF12 Antibody) at dilution of 1:50 (under 40x lens).

Various lysates were subjected to SDS PAGE followed by western blot with 12035-1-AP (KIF12 antibody) at dilution of 1:2500 incubated at room temperature for 1.5 hours.