

For Research Use Only

# KIF12 Polyclonal antibody, PBS Only

Catalog Number:12035-1-PBS



## Basic Information

**Catalog Number:**  
12035-1-PBS

**Size:**  
100ug , Concentration: 1 mg/ml by  
Nanodrop;

**Source:**  
Rabbit

**Isotype:**  
IgG

**Immunogen Catalog Number:**  
AG2707

**GenBank Accession Number:**  
BC010626

**GeneID (NCBI):**  
113220

**UNIPROT ID:**  
Q96FN5

**Full Name:**  
kinesin family member 12

**Calculated MW:**  
646 aa, 71 kDa

**Observed MW:**  
55-70 kDa

**Purification Method:**

Antigen affinity purification

## Applications

**Tested Applications:**  
WB, IHC, Indirect ELISA

**Species Specificity:**  
human, mouse, rat

## Background Information

KIF12(kinesin family member 12) is a member of the kinesin superfamily (KIF), which is a microtubule-dependent ATP-driven molecular motor, and its core is involved in the regulation of organelle transport, cell division and metabolic enzyme degradation. Its functional defects are closely related to bile duct diseases, liver diseases and tumors.

## Storage

**Storage:**  
Store at -80°C.  
**Storage Buffer:**  
PBS only, pH7.3

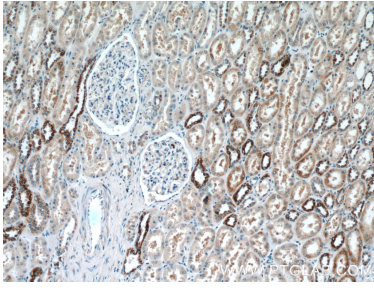
For technical support and original validation data for this product please contact:

T: 1 (888) 4PTGLAB (1-888-478-4522) (toll free  
in USA), or 1(312) 455-8498 (outside USA)

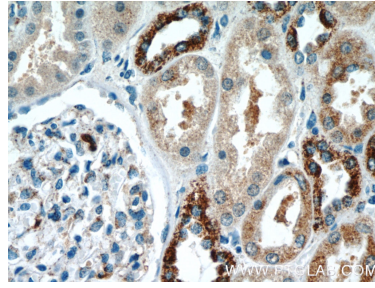
E: [proteintech@ptglab.com](mailto:proteintech@ptglab.com)  
W: [ptglab.com](http://ptglab.com)

**This product is exclusively available under Proteintech Group brand and is not available to purchase from any other manufacturer.**

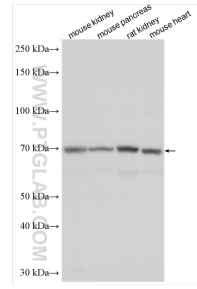
## Selected Validation Data



Immunohistochemical analysis of paraffin-embedded human kidney tissue slide using 12035-1-AP (KIF 12 Antibody) at dilution of 1:50 (under 10x lens). This data was developed using the same antibody clone with 12035-1-PBS in a different storage buffer formulation.



Immunohistochemical analysis of paraffin-embedded human kidney tissue slide using 12035-1-AP (KIF 12 Antibody) at dilution of 1:50 (under 40x lens). This data was developed using the same antibody clone with 12035-1-PBS in a different storage buffer formulation.



Various lysates were subjected to SDS PAGE followed by western blot with 12035-1-AP (KIF 12 antibody) at dilution of 1:6000 incubated at room temperature for 1.5 hours. This data was developed using the same antibody clone with 12035-1-PBS in a different storage buffer formulation.