

For Research Use Only

DVL2 Polyclonal antibody

Catalog Number: 12037-1-AP

Featured Product

26 Publications



Basic Information

Catalog Number:

12037-1-AP

Size:

150ul, Concentration: 1000 µg/ml by Nanodrop and 473 µg/ml by Bradford method using BSA as the standard;

Source:

Rabbit

Isotype:

IgG

Immunogen Catalog Number:

AG2666

GenBank Accession Number:

BC014844

GeneID (NCBI):

1856

UNIPROT ID:

O14641

Full Name:

dishevelled, dsh homolog 2 (Drosophila)

Calculated MW:

736 aa, 79 kDa

Observed MW:

90-95 kDa

Purification Method:

Antigen affinity purification

Recommended Dilutions:

WB 1:2000-1:16000

IP 0.5-4.0 µg for 1.0-3.0 mg of total protein lysate

IHC 1:50-1:500

IF 1:200-1:800

Applications

Tested Applications:

WB, IP, IF, IHC, ELISA

Cited Applications:

WB, IP, IF, IHC, CoIP

Species Specificity:

human, mouse, rat

Cited Species:

human, rat, mouse, pig, Xenopus

Note-IHC: suggested antigen retrieval with TE buffer pH 9.0; (*) Alternatively, antigen retrieval may be performed with citrate buffer pH 6.0

Positive Controls:

WB: HEK-293 cells, mouse thymus tissue, MCF-7 cells, MDA-MB-453s cells, HepG2 cells, MDA-MB-231 cells, NIH/3T3 cells

IP: MCF-7 cells,

IHC: human lung cancer tissue, human gliomas tissue, human prostate cancer tissue, mouse colon tissue, rat colon tissue

IF: HCT 116 cells, HepG2 cells

Background Information

DVL2 is member of the dishevelled (dsh) protein family. DVL2 encodes a 90-kD protein that undergoes posttranslational phosphorylation to form a 95-kD cytoplasmic protein in a variety of cell lines and species. DVL2 participates in Wnt signaling by binding to the cytoplasmic C-terminus of frizzled family members and transducing the Wnt signal to down-stream effectors. It promotes internalization and degradation of frizzled proteins upon Wnt signaling. It plays a role both in canonical and non-canonical Wnt signaling. It also Plays a role in the signal transduction pathways mediated by multiple Wnt genes.

Notable Publications

Author	Pubmed ID	Journal	Application
Zhen-Yu Shi	29039446	Int J Mol Med	WB
Mélinée Futel	30171710	J Cell Biochem	WB,IF
Xiaolong Zhang	35998547	Biochem Biophys Res Commun	WB

Storage

Storage:

Store at -20°C. Stable for one year after shipment.

Storage Buffer:

PBS with 0.02% sodium azide and 50% glycerol pH 7.3.

Aliquoting is unnecessary for -20°C storage

*** 20ul sizes contain 0.1% BSA

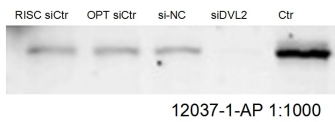
For technical support and original validation data for this product please contact:

T: 1 (888) 4PTGLAB (1-888-478-4522) (toll free in USA), or 1(312) 455-8498 (outside USA)

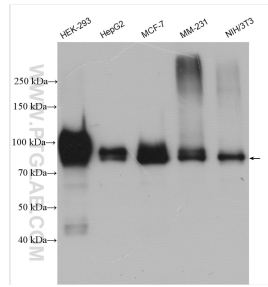
E: proteintech@ptglab.com
W: ptglab.com

This product is exclusively available under Proteintech Group brand and is not available to purchase from any other manufacturer.

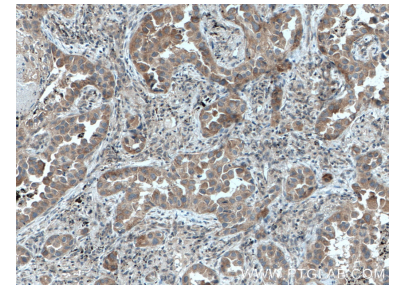
Selected Validation Data



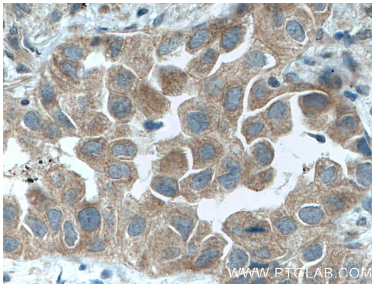
WB result of DVL2 antibody (12037-1-AP, 1:1000) with siDVL2 and si-control transfected cells.



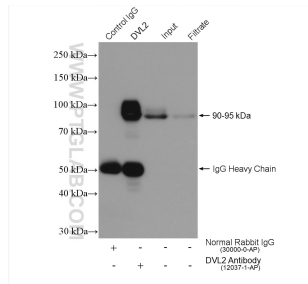
Various lysates were subjected to SDS PAGE followed by western blot with 12037-1-AP (DVL2 antibody) at dilution of 1:8000 incubated at room temperature for 1.5 hours.



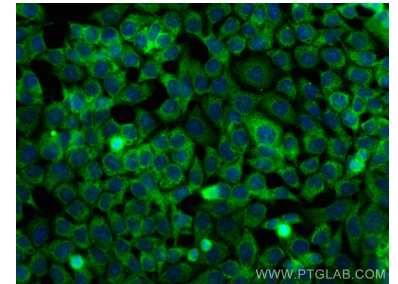
Immunohistochemical analysis of paraffin-embedded human lung cancer tissue slide using 12037-1-AP (DVL2 antibody) at dilution of 1:200 (under 10x lens. Heat mediated antigen retrieval with Tris-EDTA buffer (pH 9.0).



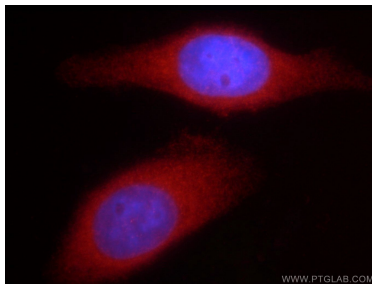
Immunohistochemical analysis of paraffin-embedded human lung cancer tissue slide using 12037-1-AP (DVL2 antibody) at dilution of 1:200 (under 40x lens. Heat mediated antigen retrieval with Tris-EDTA buffer (pH 9.0).



IP result of anti-DVL2 (IP:12037-1-AP, 4ug; Detection:12037-1-AP 1:4000) with MCF-7 cells lysate 640 ug.



Immunofluorescent analysis of (-20°C Ethanol) fixed HCT 116 cells using DVL2 antibody (12037-1-AP) at dilution of 1:400 and CoraLite®488-Conjugated AffiniPure Goat Anti-Rabbit IgG(H+L).



Immunofluorescent analysis of HepG2 cells using 12037-1-AP (DVL2 antibody) at dilution of 1:50 and Rhodamine-Goat anti-Rabbit IgG.