

For Research Use Only

CRX Polyclonal antibody

Catalog Number: 12047-1-AP

4 Publications



Basic Information

Catalog Number:

12047-1-AP

Size:

150ul, Concentration: 1000 ug/ml by Nanodrop;

Source:

Rabbit

Isotype:

IgG

Immunogen Catalog Number:

AG2677

GenBank Accession Number:

BC016664

GeneID (NCBI):

1406

UNIPROT ID:

O43186

Full Name:

cone-rod homeobox

Calculated MW:

299 aa, 32 kDa

Observed MW:

37 kDa

Purification Method:

Antigen affinity purification

Recommended Dilutions:

WB 1:500-1:1000

IP 0.5-4.0 ug for 1.0-3.0 mg of total protein lysate

IHC 1:2000-1:8000

Applications

Tested Applications:

WB, IP, IHC, ELISA

Cited Applications:

WB, IHC, IF, ColP

Species Specificity:

human, mouse, rat

Cited Species:

human, mouse, rat

Note-IHC: suggested antigen retrieval with TE buffer pH 9.0; (*) Alternatively, antigen retrieval may be performed with citrate buffer pH 6.0

Positive Controls:

WB : Y79 cells,

IP : Y79 cells,

IHC : mouse eye tissue, mouse testis tissue

Background Information

Cone-rod homeobox (Crx) is a homeodomain transcription factor and member of the Otx family, which has been thought to play a critical role in determining and maintaining the phenotype of both pinealocytes and retinal photoreceptors [PMID:17467693]. In the mammalian retina, Crx plays an essential role in the normal development and maintenance of cones and rods and regulates expression of the network of genes that characterize the retina [PMID:17653270]. Elimination of Crx by disruption of the homeobox domain results in loss of the image-forming visual system but not the non-image-forming visual system controlling circadian rhythms [PMID:20438719].

Notable Publications

Author	Pubmed ID	Journal	Application
Haibin Tian	36185374	iScience	IF
Tomohiro Masuda	25392503	J Neurosci	WB, ColP
Christoffer Nord	38546215	Dev Dyn	IHC

Storage

Storage:

Store at -20°C. Stable for one year after shipment.

Storage Buffer:

PBS with 0.02% sodium azide and 50% glycerol pH 7.3.

Aliquoting is unnecessary for -20°C storage

*** 20ul sizes contain 0.1% BSA

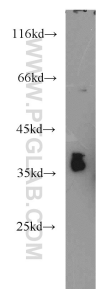
For technical support and original validation data for this product please contact:

T: 1 (888) 4PTGLAB (1-888-478-4522) (toll free in USA), or 1(312) 455-8498 (outside USA)

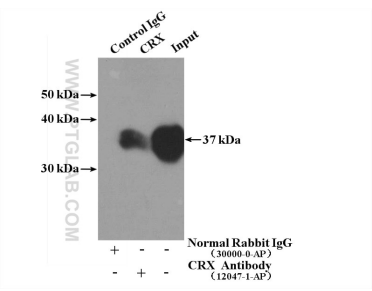
E: proteintech@ptglab.com
W: ptglab.com

This product is exclusively available under Proteintech Group brand and is not available to purchase from any other manufacturer.

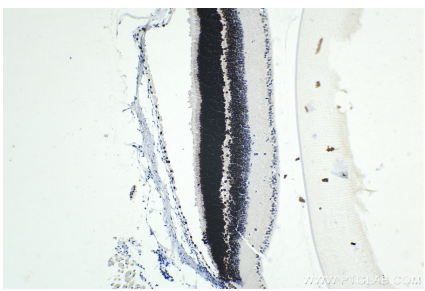
Selected Validation Data



Y79 cells were subjected to SDS PAGE followed by western blot with 12047-1-AP (CRX antibody) at dilution of 1:500 incubated at room temperature for 1.5 hours.



IP result of anti-CRX (IP:12047-1-AP, 4ug; Detection:12047-1-AP 1:500) with Y79 cells lysate 1920ug.



Immunohistochemical analysis of paraffin-embedded mouse eye tissue slide using 12047-1-AP (CRX antibody) at dilution of 1:4000 (under 10x lens). Heat mediated antigen retrieval with Tris-EDTA buffer (pH 9.0).