

For Research Use Only

# BRF2 Polyclonal antibody

Catalog Number: 12056-1-AP **1 Publications**



## Basic Information

<b>Catalog Number:</b> 12056-1-AP	<b>GenBank Accession Number:</b> BC010648	<b>Purification Method:</b> Antigen affinity purification
<b>Size:</b> 150ul , Concentration: 550 µg/ml by Nanodrop and 293 µg/ml by Bradford method using BSA as the standard;	<b>GeneID (NCBI):</b> 55290	<b>Recommended Dilutions:</b> WB 1:500-1:1000
<b>Source:</b> Rabbit	<b>Full Name:</b> BRF2, subunit of RNA polymerase III transcription initiation factor, BRF1-like	
<b>Isotype:</b> IgG	<b>Calculated MW:</b> 47 kDa	
<b>Immunogen Catalog Number:</b> AG2686	<b>Observed MW:</b> 50-60 kDa	

## Applications

<b>Tested Applications:</b> WB,ELISA	<b>Positive Controls:</b> WB : HT-1080 cells, DU 145 cells
<b>Cited Applications:</b> WB	
<b>Species Specificity:</b> human, mouse, rat	
<b>Cited Species:</b> human	

## Background Information

Human cells contain two types of RNA polymerase III transcription factor(TFIIIB), BRF1 and BRF2. BRF2,also named as BRFU, contains one TFIIIB-type zinc finger. It is a general activator of RNA polymerase III transcription. It is a factor exclusively required for RNA polymerase III transcription of genes with promoter elements upstream of the initiation sites.BRF2 is recruited to type 3 promoters such as the human U6 snRNA promoter. It differs from BRF1-TFIIIB in that it contains the TFIIIB-related factor BRF2 instead of BRF1 and its three components do not form a stable complex. This antibody is a rabbit polyclonal antibody raised against residues near the C terminus of human BRF2. It recognizes a 50-60kd band in WB analysis.

## Notable Publications

Author	Pubmed ID	Journal	Application
Jianfeng Sun	36369505	Nat Commun	WB

## Storage

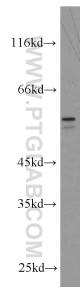
**Storage:**  
Store at -20°C. Stable for one year after shipment.  
**Storage Buffer:**  
PBS with 0.02% sodium azide and 50% glycerol pH 7.3.  
Aliquoting is unnecessary for -20°C storage

\*\*\* 20ul sizes contain 0.1% BSA

For technical support and original validation data for this product please contact:  
T: 1 (888) 4PTGLAB (1-888-478-4522) (toll free in USA), or 1(312) 455-8498 (outside USA)  
E: proteintech@ptglab.com  
W: ptglab.com

This product is exclusively available under Proteintech Group brand and is not available to purchase from any other manufacturer.

## Selected Validation Data



HT-1080 cells were subjected to SDS PAGE followed by western blot with 12056-1-AP (BRF2 antibody) at dilution of 1:300 incubated at room temperature for 1.5 hours.