

For Research Use Only

# KRAS Polyclonal antibody, PBS Only

Catalog Number: 12063-1-PBS

Featured Product



## Basic Information

### Catalog Number:

12063-1-PBS

### Size:

100ug, Concentration: 1000 µg/ml by 3845  
Nanodrop;

### Source:

Rabbit

### Isotype:

IgG

### Immunogen Catalog Number:

AG2700

### GenBank Accession Number:

BC013572

### GeneID (NCBI):

3845

### UNIPROT ID:

P01116

### Full Name:

v-Ki-ras2 Kirsten rat sarcoma viral  
oncogene homolog

### Calculated MW:

188 aa, 21 kDa

### Observed MW:

21 kDa

### Purification Method:

Antigen affinity purification

## Applications

### Tested Applications:

WB, IHC, IF/ICC, FC (Intra), IP, ELISA

### Species Specificity:

human, mouse, rat

## Background Information

KRAS, also called p21, is a member of the Ras superfamily of proteins. It is located on human chromosome 12, and contains four coding exons and a 5' non-coding exon (PMID: 12778136). KRAS is a membrane-anchored guanosine triphosphate/guanosine diphosphate (GTP/GDP)-binding protein and is widely expressed in most human cells. Like other members of the Ras family, the KRAS protein is a GTPase, and it is involved in intracellular signal transduction and mainly responsible for EGFR-signaling activation (PMID: 19117687). KRAS mutations have been found in various malignancies, including lung adenocarcinoma, mucinous adenoma, ductal carcinoma of the pancreas and colorectal carcinoma.

## Storage

### Storage:

Store at -80°C.

### Storage Buffer:

PBS Only

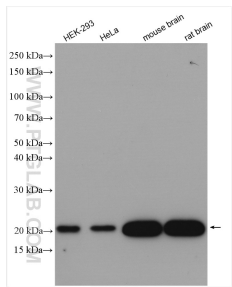
For technical support and original validation data for this product please contact:

T: 1 (888) 4PTGLAB (1-888-478-4522) (toll free  
in USA), or 1(312) 455-8498 (outside USA)

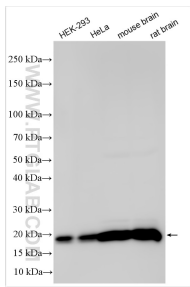
E: [proteintech@ptglab.com](mailto:proteintech@ptglab.com)  
W: [ptglab.com](http://ptglab.com)

This product is exclusively available under Proteintech Group brand and is not available to purchase from any other manufacturer.

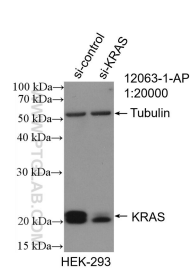
Selected Validation Data



Various lysates were subjected to SDS PAGE followed by western blot with 12063-1-AP (KRAS antibody) at dilution of 1:10000 incubated at room temperature for 1.5 hours. This data was developed using the same antibody clone with 12063-1-PBS in a different storage buffer formulation.



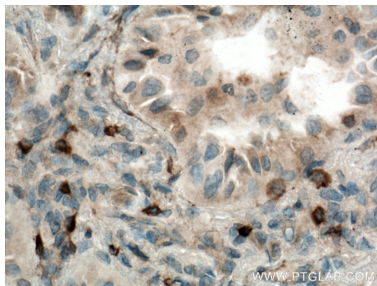
Various lysates were subjected to SDS PAGE followed by western blot with 12063-1-AP (KRAS antibody) at dilution of 1:40000 incubated at room temperature for 1.5 hours. This data was developed using the same antibody clone with 12063-1-PBS in a different storage buffer formulation.



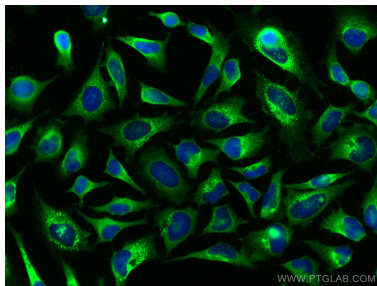
WB result of KRAS antibody (12063-1-AP; 1:2000; incubated at room temperature for 1.5 hours) with sh-Control and sh-KRAS transfected HEK-293 cells. This data was developed using the same antibody clone with 12063-1-PBS in a different storage buffer formulation.



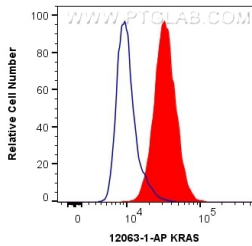
Immunohistochemical analysis of paraffin-embedded human lung cancer tissue slide using 12063-1-AP (KRAS antibody) at dilution of 1:800 (under 10x lens. Heat mediated antigen retrieval with Tris-EDTA buffer (pH 9.0). This data was developed using the same antibody clone with 12063-1-PBS in a different storage buffer formulation.



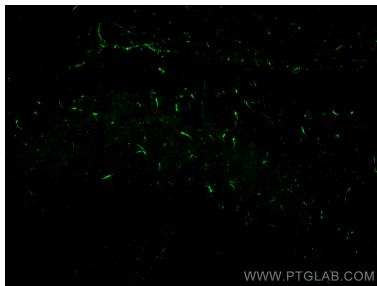
Immunohistochemical analysis of paraffin-embedded human lung cancer tissue slide using 12063-1-AP (KRAS antibody) at dilution of 1:800 (under 40x lens. Heat mediated antigen retrieval with Tris-EDTA buffer (pH 9.0). This data was developed using the same antibody clone with 12063-1-PBS in a different storage buffer formulation.



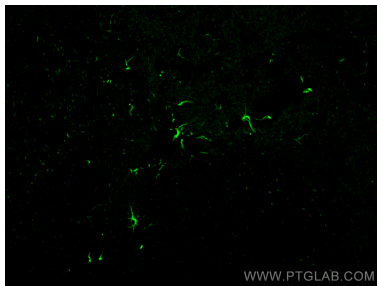
Immunofluorescent analysis of (-20°C Methanol) fixed HeLa cells using KRAS antibody (12063-1-AP) at dilution of 1:400 and CoraLite®488-Conjugated AffiniPure Goat Anti-Rabbit IgG(H+L). This data was developed using the same antibody clone with 12063-1-PBS in a different storage buffer formulation.



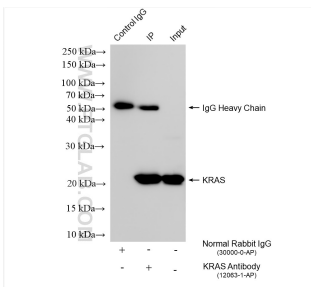
1X10<sup>6</sup> HeLa cells were intracellularly stained with 0.4 ug Anti-Human KRAS (12063-1-AP) and CoraLite®488-Conjugated AffiniPure Goat Anti-Rabbit IgG(H+L) at dilution 1:1000 (red), or 0.4 ug Control Antibody. Cells were fixed with 4% PFA and permeabilized with Flow Cytometry Perm Buffer (PF00011-C). This data was developed using the same antibody clone with 12063-1-PBS in a different storage buffer formulation.



Immunofluorescent analysis of (4% PFA) fixed paraffin-embedded mouse brain tissue using KRAS antibody (12063-1-AP) at dilution of 1:200 and CoraLite®488-Conjugated Goat Anti-Rabbit IgG(H+L) (SA00013-2). Heat mediated antigen retrieval with Tris-EDTA buffer (pH 9.0). This data was developed using the same antibody clone with 12063-1-PBS in a different storage buffer formulation.



Immunofluorescent analysis of (4% PFA) fixed paraffin-embedded mouse brain tissue using KRAS antibody (12063-1-AP) at dilution of 1:200 and CoraLite®488-Conjugated Goat Anti-Rabbit IgG(H+L) (SA00013-2). Heat mediated antigen retrieval with Tris-EDTA buffer (pH 9.0). This data was developed using the same antibody clone with 12063-1-PBS in a different storage buffer formulation.



IP result of anti-KRAS (IP:12063-1-AP, 4ug;  
Detection:12063-1-AP 1:10000) with HeLa cells  
lysate 1280 ug. This data was developed using the  
same antibody clone with 12063-1-PBS in a  
different storage buffer formulation.