

For Research Use Only

TINAGL1 Polyclonal antibody

Catalog Number: 12077-1-AP

Featured Product

8 Publications



Basic Information

Catalog Number:

12077-1-AP

Size:

150ul, Concentration: 600 ug/ml by Nanodrop;

Source:

Rabbit

Isotype:

IgG

Immunogen Catalog Number:

AG2721

GenBank Accession Number:

BC009048

GeneID (NCBI):

64129

UNIPROT ID:

Q9GZM7

Full Name:

tubulointerstitial nephritis antigen-like 1

Calculated MW:

467 aa, 52 kDa

Observed MW:

52 kDa

Purification Method:

Antigen affinity purification

Recommended Dilutions:

WB 1:300-1:1500

IP 0.5-4.0 ug for 1.0-3.0 mg of total protein lysate

IHC 1:50-1:500

IF-P 1:50-1:500

IF/ICC 1:200-1:800

Applications

Tested Applications:

WB, IHC, IF/ICC, IF-P, IP, ELISA

Cited Applications:

WB, IHC, IP

Species Specificity:

human, mouse, rat

Cited Species:

human, mouse

Note-IHC: suggested antigen retrieval with TE buffer pH 9.0; (*) Alternatively, antigen retrieval may be performed with citrate buffer pH 6.0

Positive Controls:

WB: human placenta tissue, human adrenal gland tissue

IP: mouse heart tissue,

IHC: human liver cancer tissue,

IF-P: human liver cancer tissue,

IF/ICC: HepG2 cells,

Background Information

Tubulointerstitial nephritis antigen-like 1 (Tinagl1), a secreted extracellular protein, was initially identified as a putative component of the ECM. Tinagl1 is most commonly associated with embryonic development, including the heart and adrenal glands. Low levels of Tinagl1 expression can be dire for craniofacial development and for female fertility.

Notable Publications

Author	Pubmed ID	Journal	Application
Yoriko Sato	35597451	Biochim Biophys Acta Mol Cell Res	WB
Lu Sun	30697069	Cancer Manag Res	WB
Wen-Qing Tian	35199864	FASEB J	WB, IHC

Storage

Storage:

Store at -20°C. Stable for one year after shipment.

Storage Buffer:

PBS with 0.02% sodium azide and 50% glycerol pH 7.3.

Aliquoting is unnecessary for -20°C storage

*** 20ul sizes contain 0.1% BSA

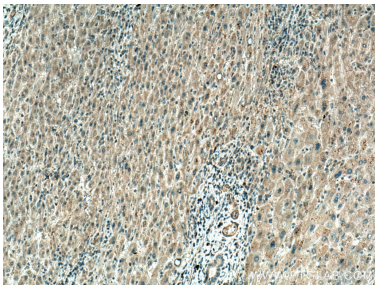
For technical support and original validation data for this product please contact:

T: 1 (888) 4PTGLAB (1-888-478-4522) (toll free in USA), or 1(312) 455-8498 (outside USA)

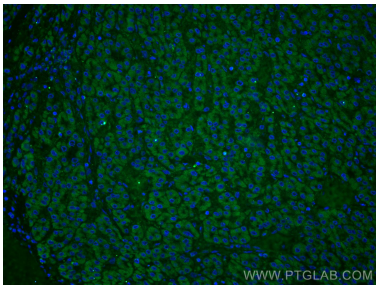
E: proteintech@ptglab.com
W: ptglab.com

This product is exclusively available under Proteintech Group brand and is not available to purchase from any other manufacturer.

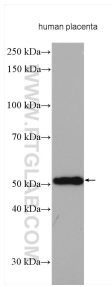
Selected Validation Data



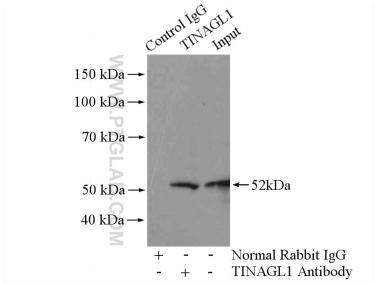
Immunohistochemical analysis of paraffin-embedded human liver cancer tissue slide using 12077-1-AP (TINAGL1 antibody) at dilution of 1:200 (under 10x lens). Heat mediated antigen retrieval with Tris-EDTA buffer (pH 9.0).



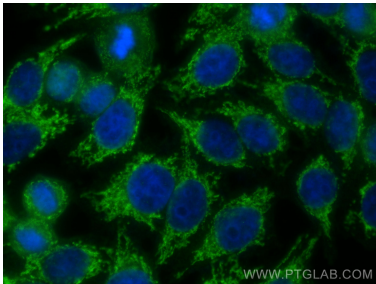
Immunofluorescent analysis of (4% PFA) fixed human liver cancer tissue using TINAGL1 antibody (12077-1-AP) at dilution of 1:200 and CoraLite®488-Conjugated AffiniPure Goat Anti-Rabbit IgG(H+L).



human placenta tissue were subjected to SDS PAGE followed by western blot with 12077-1-AP (TINAGL1 antibody) at dilution of 1:1000 incubated at room temperature for 1.5 hours.



IP result of anti-TINAGL1 (IP:12077-1-AP, 4ug; Detection:12077-1-AP 1:500) with mouse heart tissue lysate 4000ug.



Immunofluorescent analysis of (-20°C Ethanol) fixed HepG2 cells using TINAGL1 antibody (12077-1-AP) at dilution of 1:400 and Multi-rAb CoraLite® Plus 488-Goat Anti-Rabbit Recombinant Secondary Antibody (H+L) (RGAR002).