

For Research Use Only

TINAGL1 Polyclonal antibody, PBS Only

Catalog Number: 12077-1-PBS

Featured Product



Basic Information

Catalog Number:

12077-1-PBS

Size:

100ug, Concentration: 1 mg/ml by Nanodrop;

Source:

Rabbit

Isotype:

IgG

Immunogen Catalog Number:

AG2721

GenBank Accession Number:

BC009048

GeneID (NCBI):

64129

UNIPROT ID:

Q9GZM7

Full Name:

tubulointerstitial nephritis antigen-like 1

Calculated MW:

467 aa, 52 kDa

Observed MW:

52 kDa

Purification Method:

Antigen affinity purification

Applications

Tested Applications:

WB, IHC, IF/ICC, IF-P, IP, Indirect ELISA

Species Specificity:

human, mouse, rat

Background Information

Tubulointerstitial nephritis antigen-like 1 (Tinagl1), a secreted extracellular protein, was initially identified as a putative component of the ECM. Tinagl1 is most commonly associated with embryonic development, including the heart and adrenal glands. Low levels of Tinagl1 expression can be dire for craniofacial development and for female fertility.

Storage

Storage:

Store at -80°C.

Storage Buffer:

PBS Only

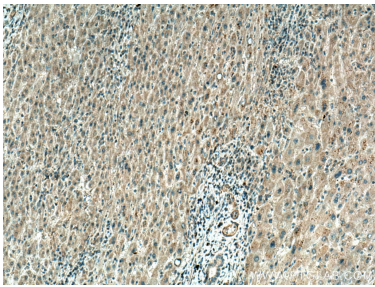
For technical support and original validation data for this product please contact:

T: 1 (888) 4PTGLAB (1-888-478-4522) (toll free in USA), or 1(312) 455-8498 (outside USA)

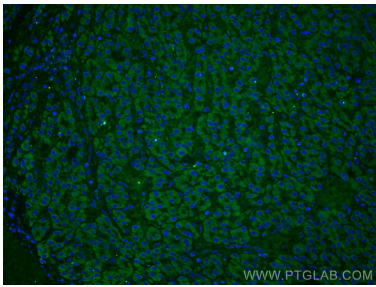
E: proteintech@ptglab.com
W: ptglab.com

This product is exclusively available under Proteintech Group brand and is not available to purchase from any other manufacturer.

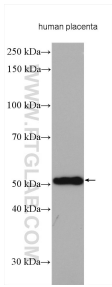
Selected Validation Data



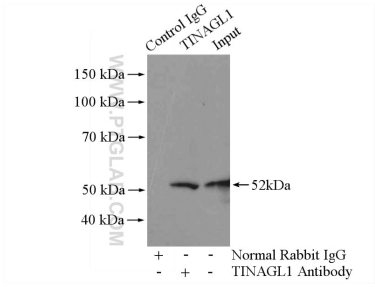
Immunohistochemical analysis of paraffin-embedded human liver cancer tissue slide using 12077-1-AP (TINAGL1 antibody) at dilution of 1:200 (under 10x lens). Heat mediated antigen retrieval with Tris-EDTA buffer (pH 9.0). This data was developed using the same antibody clone with 12077-1-PBS in a different storage buffer formulation.



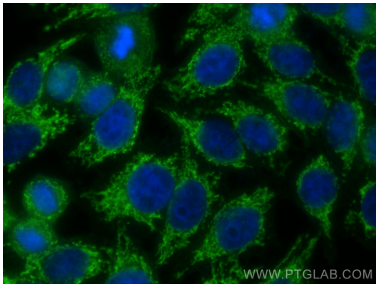
Immunofluorescent analysis of (4% PFA) fixed human liver cancer tissue using TINAGL1 antibody (12077-1-AP) at dilution of 1:200 and CoraLite®488-Conjugated AffiniPure Goat Anti-Rabbit IgG(H+L). This data was developed using the same antibody clone with 12077-1-PBS in a different storage buffer formulation.



human placenta tissue were subjected to SDS PAGE followed by western blot with 12077-1-AP (TINAGL1 antibody) at dilution of 1:1000 incubated at room temperature for 1.5 hours. This data was developed using the same antibody clone with 12077-1-PBS in a different storage buffer formulation.



IP result of anti-TINAGL1 (IP:12077-1-AP, 4ug; Detection:12077-1-AP 1:500) with mouse heart tissue lysate 4000ug. This data was developed using the same antibody clone with 12077-1-PBS in a different storage buffer formulation.



Immunofluorescent analysis of (-20°C Ethanol) fixed HepG2 cells using TINAGL1 antibody (12077-1-AP) at dilution of 1:400 and Multi-rAb CoraLite ® Plus 488-Goat Anti-Rabbit Recombinant Secondary Antibody (H+L) (RGAR002). This data was developed using the same antibody clone with 12077-1-PBS in a different storage buffer formulation.