

For Research Use Only

REEP6 Polyclonal antibody

Catalog Number: 12088-1-AP

Featured Product

5 Publications



Basic Information

Catalog Number:

12088-1-AP

Size:

150ul, Concentration: 350 ug/ml by Nanodrop and 233 ug/ml by Bradford method using BSA as the standard;

Source:

Rabbit

Isotype:

IgG

Immunogen Catalog Number:

AG2723

GenBank Accession Number:

BC008201

GeneID (NCBI):

92840

UNIPROT ID:

Q96HR9

Full Name:

receptor accessory protein 6

Calculated MW:

201 aa, 22 kDa

Observed MW:

17-22 kDa

Purification Method:

Antigen affinity purification

Recommended Dilutions:

WB 1:500-1:2000

IP 0.5-4.0 ug for 1.0-3.0 mg of total protein lysate

IHC 1:50-1:500

IF/ICC 1:200-1:800

Applications

Tested Applications:

WB, IHC, IF/ICC, IP, ELISA

Cited Applications:

WB, IHC, IF, IP

Species Specificity:

human, mouse, rat

Cited Species:

human, mouse, rat

Note-IHC: suggested antigen retrieval with TE buffer pH 9.0; (*) Alternatively, antigen retrieval may be performed with citrate buffer pH 6.0

Positive Controls:

WB: BxPC-3 cells, HepG2 cells, mouse liver tissue, rat liver tissue

IP: BxPC-3 cells,

IHC: human pancreas cancer tissue,

IF/ICC: HepG2 cells, mouse olfactory epithelium tissue

Notable Publications

Author	Pubmed ID	Journal	Application
Genevieve C Van de Bittner	28112682	J Clin Invest	WB
Gavin Arno	27889058	Am J Hum Genet	WB,IF
M G Sharoar	26619807	Mol Psychiatry	IP

Storage

Storage:

Store at -20°C. Stable for one year after shipment.

Storage Buffer:

PBS with 0.02% sodium azide and 50% glycerol pH 7.3.

Aliquoting is unnecessary for -20°C storage

*** 20ul sizes contain 0.1% BSA

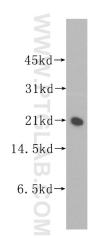
For technical support and original validation data for this product please contact:

T: 1 (888) 4PTGLAB (1-888-478-4522) (toll free in USA), or 1(312) 455-8498 (outside USA)

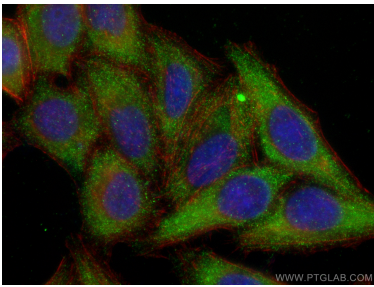
E: proteintech@ptglab.com
W: ptglab.com

This product is exclusively available under Proteintech Group brand and is not available to purchase from any other manufacturer.

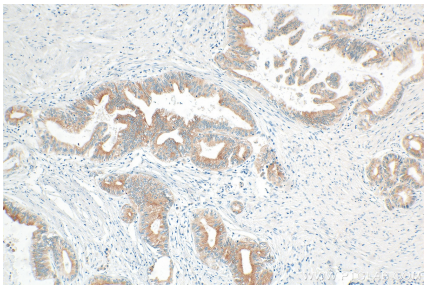
Selected Validation Data



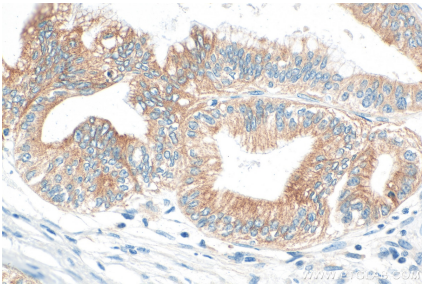
BxPC-3 cells were subjected to SDS PAGE followed by western blot with 12088-1-AP (REEP6 antibody) at dilution of 1:400 incubated at room temperature for 1.5 hours.



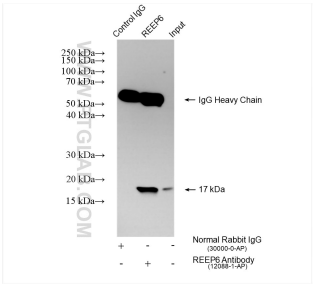
Immunofluorescent analysis of (-20°C Ethanol) fixed HepG2 cells using REEP6 antibody (12088-1-AP) at dilution of 1:400 and CoraLite® 488-Conjugated Goat Anti-Rabbit IgG(H+L) (SA00013-2), CL594-Phalloidin (red).



Immunohistochemical analysis of paraffin-embedded human pancreas cancer tissue slide using 12088-1-AP (REEP6 antibody) at dilution of 1:200 (under 10x lens). Heat mediated antigen retrieval with Tris-EDTA buffer (pH 9.0).



Immunohistochemical analysis of paraffin-embedded human pancreas cancer tissue slide using 12088-1-AP (REEP6 antibody) at dilution of 1:200 (under 40x lens). Heat mediated antigen retrieval with Tris-EDTA buffer (pH 9.0).



IP result of anti-REEP6 (IP:12088-1-AP, 4ug; Detection:12088-1-AP 1:600) with BxPC-3 cells lysate 2080 ug.