

For Research Use Only

SLC16A5 Polyclonal antibody

Catalog Number: 12120-1-AP



Basic Information

Catalog Number: 12120-1-AP	GenBank Accession Number: BC009684	Purification Method: Antigen affinity purification
Size: 150ul , Concentration: 1300 µg/ml by Nanodrop;	GeneID (NCBI): 9121	Recommended Dilutions: WB 1:500-1:1000 IHC 1:50-1:500
Source: Rabbit	Full Name: solute carrier family 16, member 5 (monocarboxylic acid transporter 6)	
Isotype: IgG	Calculated MW: 505 aa, 55 kDa	
Immunogen Catalog Number: AG2762	Observed MW: 50-55 kDa	

Applications

Tested Applications:

IHC, WB, ELISA

Species Specificity:

human, mouse

Note-IHC: suggested antigen retrieval with TE buffer pH 9.0; (*) Alternatively, antigen retrieval may be performed with citrate buffer pH 6.0

Positive Controls:

WB : mouse skeletal muscle tissue, human placenta tissue

IHC : human breast cancer tissue, human kidney tissue

Background Information

Monocarboxylate transporter 5 (SLC16A5), also named as MCT6, is a member of the MCT family. SLC16A5 is a proton-linked monocarboxylate transporter that catalyzes the rapid transport across the plasma membrane of many monocarboxylates and it can transport various drugs. It has been reported that SLC16A5 mutation may be a novel genetic risk factor for cisplatin-induced ototoxic (CIO) in testicular cancer patients. There are some isoforms of SLC16A5 among 50-55 kDa. (PMID: 16174808, 28448657)

Storage

Storage:

Store at -20°C. Stable for one year after shipment.

Storage Buffer:

PBS with 0.02% sodium azide and 50% glycerol pH 7.3.

Aliquoting is unnecessary for -20°C storage

*** 20ul sizes contain 0.1% BSA

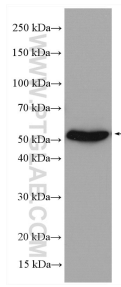
For technical support and original validation data for this product please contact:

T: 1 (888) 4PTGLAB (1-888-478-4522) (toll free in USA), or 1(312) 455-8498 (outside USA)

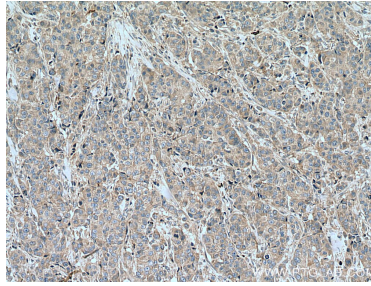
E: proteintech@ptglab.com
W: ptglab.com

This product is exclusively available under Proteintech Group brand and is not available to purchase from any other manufacturer.

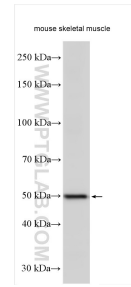
Selected Validation Data



mouse skeletal muscle tissue were subjected to SDS PAGE followed by western blot with 12120-1-AP (SLC16A5 antibody) at dilution of 1:500 incubated at room temperature for 1.5 hours.



Immunohistochemical analysis of paraffin-embedded human breast cancer tissue slide using 12120-1-AP (SLC16A5 antibody) at dilution of 1:200 (under 10x lens). Heat mediated antigen retrieval with Tris-EDTA buffer (pH 9.0).



Various lysates were subjected to SDS PAGE followed by western blot with 12120-1-AP (SLC16A5 antibody) at dilution of 1:500 incubated at room temperature for 1.5 hours.