

For Research Use Only

WSB2 Polyclonal antibody

Catalog Number: 12124-2-AP **4 Publications**



Basic Information

Catalog Number: 12124-2-AP	GenBank Accession Number: BC015887	Purification Method: Antigen affinity purification
Size: 150ul , Concentration: 400 µg/ml by Nanodrop and 267 µg/ml by Bradford method using BSA as the standard;	GeneID (NCBI): 55884	Recommended Dilutions: WB 1:500-1:2000 IP 0.5-4.0 µg for IP and 1:500-1:1000 for WB
Source: Rabbit	Full Name: WD repeat and SOCS box-containing 2	IF 1:10-1:100
Isotype: IgG	Calculated MW: 404 aa, 45 kDa	
Immunogen Catalog Number: AG2768	Observed MW: 50 kDa	

Applications

Tested Applications: IF, IP, WB, ELISA	Positive Controls: WB : PC-3 cells, rat kidney tissue, mouse kidney tissue, human brain tissue
Cited Applications: CoIP, IHC, IP, WB	IP : mouse kidney tissue,
Species Specificity: human, mouse, rat	IF : HepG2 cells,
Cited Species: human	

Background Information

WSB2, also named SBA2, encodes WD repeat and SOCS box-containing protein 2. WSB2 may be a substrate-recognition component of an E3 ubiquitin ligase complex which mediates the ubiquitination and subsequent proteasomal degradation of target proteins. WSB2 is a novel protein supposed to be involved in male- and female-specific gonadal development, and also a regulator of IL-21 receptor expression and IL21-induced signal transduction. WSB2 might be a promising novel biomarker of cell differentiation in colorectal cancer and its biological functions need further studies.

Notable Publications

Author	Pubmed ID	Journal	Application
Gautier Stoll	31069148	Oncoimmunology	IHC
Ke Lu	37943017	Elife	IP
Zhiqin Yang	36866240	J Oncol	WB, IHC, CoIP

Storage

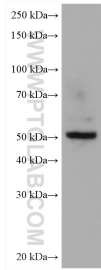
Storage:
Store at -20°C. Stable for one year after shipment.
Storage Buffer:
PBS with 0.02% sodium azide and 50% glycerol pH 7.3.
Aliquoting is unnecessary for -20°C storage

*** 20ul sizes contain 0.1% BSA

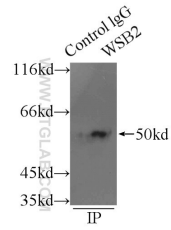
For technical support and original validation data for this product please contact:
T: 1 (888) 4PTGLAB (1-888-478-4522) (toll free in USA), or 1(312) 455-8498 (outside USA)
E: proteintech@ptglab.com
W: ptglab.com

This product is exclusively available under Proteintech Group brand and is not available to purchase from any other manufacturer.

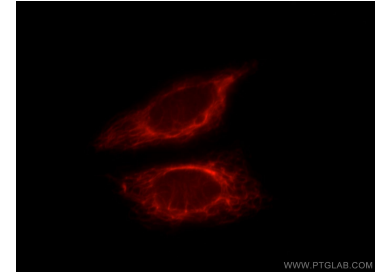
Selected Validation Data



PC-3 cells were subjected to SDS PAGE followed by western blot with 12124-2-AP (WSB2 antibody) at dilution of 1:1000 incubated at room temperature for 1.5 hours.



IP Result of anti-WSB2 (IP:12124-2-AP, 3ug; Detection:12124-2-AP 1:800) with mouse kidney tissue lysate 6000ug.



Immunofluorescent analysis of HepG2 cells, using WSB2 antibody 12124-2-AP at 1:25 dilution and Rhodamine-labeled goat anti-rabbit IgG (red).