

For Research Use Only

RAB22A Polyclonal antibody

Catalog Number: 12125-1-AP

Featured Product

22 Publications



Basic Information

Catalog Number: 12125-1-AP	GenBank Accession Number: BC015710	Purification Method: Antigen affinity purification
Size: 150ul , Concentration: 300 µg/ml by Nanodrop and 267 µg/ml by Bradford method using BSA as the standard;	GeneID (NCBI): 57403	Recommended Dilutions: WB 1:500-1:1000 IP 0.5-4.0 ug for 1.0-3.0 mg of total protein lysate IHC 1:50-1:500
Source: Rabbit	Full Name: RAB22A, member RAS oncogene family	
Isotype: IgG	Calculated MW: 194 aa, 22 kDa	
Immunogen Catalog Number: AG2769	Observed MW: 22 kDa	

Applications

Tested Applications: IHC, IP, WB, ELISA	Positive Controls: WB : COLO 320 cells, Jurkat cells, BxPC-3 cells, A375 cells IP : COLO 320 cells, IHC : human gliomas tissue,
Cited Applications: IF, IHC, WB	
Species Specificity: human	
Cited Species: human, mouse, hamster, canine	
Note-IHC: suggested antigen retrieval with TE buffer pH 9.0; (*) Alternatively, antigen retrieval may be performed with citrate buffer pH 6.0	

Background Information

RAB22A is a small GTPase that is expressed ubiquitously in mammalian tissues. It localizes in the MHCI-containing recycling endosomal tubules and functions in endocytic pathway. RAB22A may regulate the dynamic interactions of endosomal compartments and it may be involved in the communication between the biosynthetic and early endocytic pathways. It shares 81% identity with RAB31.

Notable Publications

Author	Pubmed ID	Journal	Application
Dan Li	36231028	Cells	IHC, WB
Yuan Yin	28928161	Clin Cancer Res	WB, IHC
Margue Christiane C	24039954	PLoS One	WB

Storage

Storage:
Store at -20°C. Stable for one year after shipment.
Storage Buffer:
PBS with 0.02% sodium azide and 50% glycerol pH 7.3.
Aliquoting is unnecessary for -20°C storage

*** 20ul sizes contain 0.1% BSA

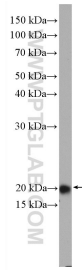
For technical support and original validation data for this product please contact:

T: 1 (888) 4PTGLAB (1-888-478-4522) (toll free in USA), or 1(312) 455-8498 (outside USA)

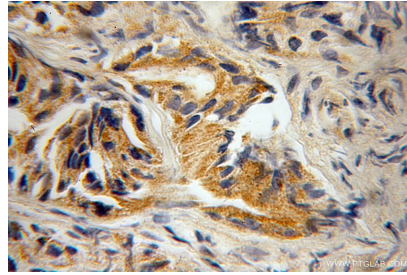
E: proteintech@ptglab.com
W: ptglab.com

This product is exclusively available under Proteintech Group brand and is not available to purchase from any other manufacturer.

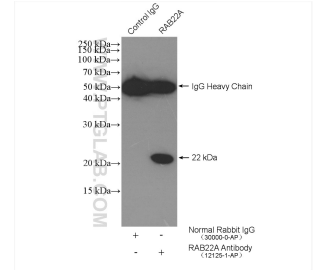
Selected Validation Data



COLO 320 cells were subjected to SDS PAGE followed by western blot with 12125-1-AP (RAB22A antibody) at dilution of 1:600 incubated at room temperature for 1.5 hours.



Immunohistochemical analysis of paraffin-embedded human gliomas using 12125-1-AP (RAB22A antibody) at dilution of 1:100 (under 10x lens).



IP result of anti-RAB22A (IP:12125-1-AP, 4ug; Detection:12125-1-AP 1:300) with COLO 320 cells lysate 2560 ug.