

For Research Use Only

SYTL4 Polyclonal antibody

Catalog Number: 12128-1-AP

Featured Product

6 Publications



Basic Information

Catalog Number:

12128-1-AP

Size:

150ul, Concentration: 350 ug/ml by Nanodrop and 260 ug/ml by Bradford method using BSA as the standard;

Source:

Rabbit

Isotype:

IgG

Immunogen Catalog Number:

AG2772

GenBank Accession Number:

BC014913

GeneID (NCBI):

94121

UNIPROT ID:

Q96C24

Full Name:

synaptotagmin-like 4

Calculated MW:

671 aa, 76 kDa

Observed MW:

76 kDa

Purification Method:

Antigen affinity purification

Recommended Dilutions:

WB 1:500-1:3000

IP 0.5-4.0 ug for 1.0-3.0 mg of total protein lysate

IHC 1:50-1:500

Applications

Tested Applications:

WB, IP, IHC, ELISA

Cited Applications:

WB, IF, IP

Species Specificity:

human, mouse

Cited Species:

human, rat

Note-IHC: suggested antigen retrieval with TE buffer pH 9.0; (*) Alternatively, antigen retrieval may be performed with citrate buffer pH 6.0

Positive Controls:

WB : HeLa cells, mouse pancreas tissue, U2OS cells

IP : HEK-293 cells,

IHC : human breast cancer tissue,

Background Information

SYTL4, also known as SLP4 or granuphilin, is a member of the synaptotagmin-like protein (Slp) family. Members of this family are characterized by presence of an N-terminal Slp homology domain (SHD), which functions as a Rab27-binding domain, and C-terminal tandem C2 domains, putative Ca(2+)-binding motifs. SYTL4 is specifically expressed on dense-core granules in certain neuroendocrine cells and negatively controls dense-core vesicle exocytosis through specific interaction with Rab27A. (PMID: 16481396; 16473610)

Notable Publications

Author	Pubmed ID	Journal	Application
Akiko Takahashi	28508895	Nat Commun	WB
Frédéric Adam	29519941	Arterioscler Thromb Vasc Biol	WB,IP
Xi-Yu Liu	33042263	Theranostics	WB,IF

Storage

Storage:

Store at -20°C. Stable for one year after shipment.

Storage Buffer:

PBS with 0.02% sodium azide and 50% glycerol pH 7.3.

Aliquoting is unnecessary for -20°C storage

*** 20ul sizes contain 0.1% BSA

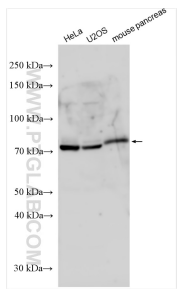
For technical support and original validation data for this product please contact:

T: 1 (888) 4PTGLAB (1-888-478-4522) (toll free in USA), or 1(312) 455-8498 (outside USA)

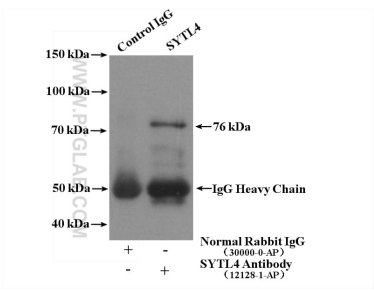
E: proteintech@ptglab.com
W: ptglab.com

This product is exclusively available under Proteintech Group brand and is not available to purchase from any other manufacturer.

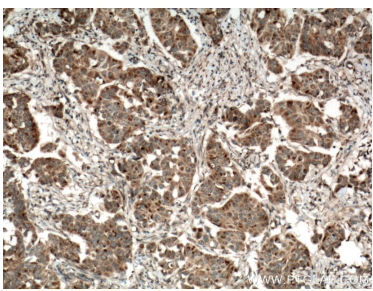
Selected Validation Data



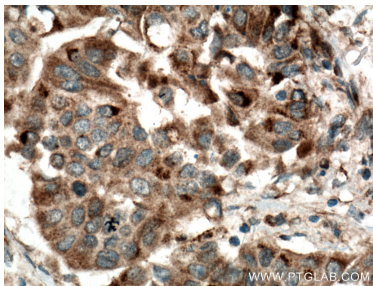
Various lysates were subjected to SDS PAGE followed by western blot with 12128-1-AP (SYTL4 antibody) at dilution of 1:1500 incubated at room temperature for 1.5 hours.



IP result of anti-SYTL4 (IP:12128-1-AP, 4ug; Detection:12128-1-AP 1:300) with HEK-293 cells lysate 1600 ug.



Immunohistochemical analysis of paraffin-embedded human breast cancer tissue slide using 12128-1-AP (SYTL4 antibody) at dilution of 1:200 (under 10x lens).



Immunohistochemical analysis of paraffin-embedded human breast cancer tissue slide using 12128-1-AP (SYTL4 antibody) at dilution of 1:200 (under 40x lens).