

For Research Use Only

SAP130 Polyclonal antibody

Catalog Number: 12130-1-AP



Basic Information

Catalog Number: 12130-1-AP	GenBank Accession Number: BC017453	Purification Method: Antigen affinity purification
Size: 150ul , Concentration: 200 µg/ml by Nanodrop and 187 µg/ml by Bradford method using BSA as the standard;	GeneID (NCBI): 79595	Recommended Dilutions: WB 1:500-1:2000 IP 0.5-4.0 ug for IP and 1:500-1:1000 for WB
Source: Rabbit	Full Name: Sin3A-associated protein, 130kDa	IHC 1:20-1:200
Isotype: IgG	Calculated MW: 110 kDa	IF 1:50-1:500
Immunogen Catalog Number: AG2774	Observed MW: 130 kDa	

Applications

Tested Applications: IF, IHC, IP, WB, ELISA	Positive Controls: WB : HEK-293 cells, HeLa cells, HepG2 cells, Jurkat cells, K-562 cells
Species Specificity: human	IP : HepG2 cells,
Note-IHC: suggested antigen retrieval with TE buffer pH 9.0; (*) Alternatively, antigen retrieval may be performed with citrate buffer pH 6.0	IHC : human pancreas cancer tissue,
	IF : HepG2 cells,

Background Information

SF3b is a U2 snRNP-associated protein complex essential for spliceosome assembly. SF3b contains the spliceosomal proteins SAP 49, SAP 130, SAP 145, and SAP 155. SAP 130, SAP 145, and SAP 155 are present in a protein complex and associate with one another. While SAP 155 and SAP 130 interact with each other (directly or indirectly) within this complex, SAP 49 and SAP 145 are known to interact directly with each other. Unexpectedly, the SAP 49-SAP 145 protein-protein interaction requires the amino-terminus of SAP 49, which contains two RNA-recognition motifs. The observation that SAP 49 and SAP 145 interact directly with both U2 snRNP and the pre-mRNA suggests that this protein complex plays a role in tethering U2 snRNP to the branch site.

Storage

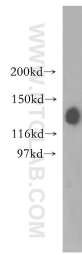
Storage:
Store at -20°C. Stable for one year after shipment.
Storage Buffer:
PBS with 0.02% sodium azide and 50% glycerol pH 7.3.
Aliquoting is unnecessary for -20°C storage

*** 20ul sizes contain 0.1% BSA

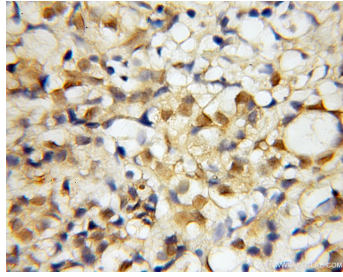
For technical support and original validation data for this product please contact:
T: 1 (888) 4PTGLAB (1-888-478-4522) (toll free in USA), or 1(312) 455-8498 (outside USA)
E: proteintech@ptglab.com
W: ptglab.com

This product is exclusively available under Proteintech Group brand and is not available to purchase from any other manufacturer.

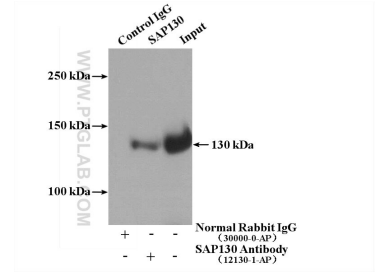
Selected Validation Data



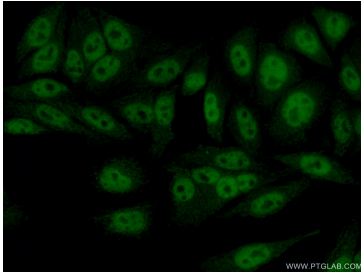
HEK-293 cells were subjected to SDS PAGE followed by western blot with 12130-1-AP (SAP130 antibody) at dilution of 1:400 incubated at room temperature for 1.5 hours.



Immunohistochemical analysis of paraffin-embedded human pancreas cancer using 12130-1-AP (SAP130 antibody) at dilution of 1:50 (under 10x lens).



IP Result of anti-SAP130 (IP:12130-1-AP, 4ug; Detection:12130-1-AP 1:600) with HepG2 cells lysate 1000ug.



Immunofluorescent analysis of (10% Formaldehyde) fixed HepG2 cells using 12130-1-AP (SAP130 antibody) at dilution of 1:50 and Alexa Fluor 488-conjugated AffiniPure Goat Anti-Rabbit IgG(H+L).