

For Research Use Only

# CREM Polyclonal antibody

Catalog Number: 12131-1-AP

6 Publications



## Basic Information

### Catalog Number:

12131-1-AP

### Size:

150ul, Concentration: 600 ug/ml by Nanodrop;

### Source:

Rabbit

### Isotype:

IgG

### Immunogen Catalog Number:

AG2775

### GenBank Accession Number:

BC017117

### GeneID (NCBI):

1390

### UNIPROT ID:

Q03060

### Full Name:

cAMP responsive element modulator

### Calculated MW:

332 aa, 36 kDa

### Observed MW:

36 kDa

### Purification Method:

Antigen affinity purification

### Recommended Dilutions:

WB 1:200-1:1000

IP 0.5-4.0 ug for 1.0-3.0 mg of total protein lysate

IHC 1:400-1:1600

## Applications

### Tested Applications:

WB, IP, IHC, ELISA

### Cited Applications:

WB, IF, IHC

### Species Specificity:

human, mouse, rat

### Cited Species:

human, mouse

**Note-IHC: suggested antigen retrieval with TE buffer pH 9.0; (\*) Alternatively, antigen retrieval may be performed with citrate buffer pH 6.0**

### Positive Controls:

WB : rat testis tissue,

IP : mouse testis tissue,

IHC : human prostate cancer tissue,

## Notable Publications

Author	Pubmed ID	Journal	Application
Ali AbuMadighem	35334473	Biofabrication	IF
Noy Bagdadi	33498962	Int J Mol Sci	IF
Bara'ah Khaleel	35409373	Int J Mol Sci	IF

## Storage

### Storage:

Store at -20°C. Stable for one year after shipment.

### Storage Buffer:

PBS with 0.02% sodium azide and 50% glycerol pH 7.3.

Aliquoting is unnecessary for -20°C storage

\*\*\* 20ul sizes contain 0.1% BSA

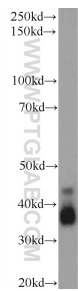
For technical support and original validation data for this product please contact:

T: 1 (888) 4PTGLAB (1-888-478-4522) (toll free in USA), or 1(312) 455-8498 (outside USA)

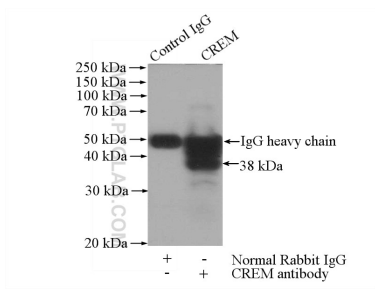
E: [proteintech@ptglab.com](mailto:proteintech@ptglab.com)  
W: [ptglab.com](http://ptglab.com)

This product is exclusively available under Proteintech Group brand and is not available to purchase from any other manufacturer.

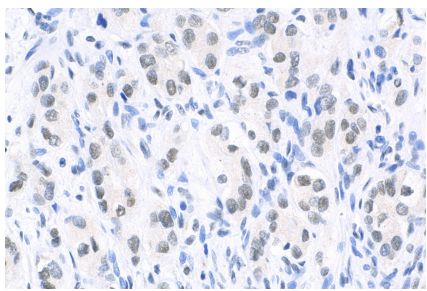
Selected Validation Data



rat testis tissue were subjected to SDS PAGE followed by western blot with 12131-1-AP (CREM Antibody) at dilution of 1:300 incubated at room temperature for 1.5 hours.



IP result of anti-CREM (IP:12131-1-AP, 4ug; Detection:12131-1-AP 1:300) with mouse testis tissue lysate 1800ug.



Immunohistochemical analysis of paraffin-embedded human prostate cancer tissue slide using 12131-1-AP (CREM antibody) at dilution of 1:800 (under 40x lens). Heat mediated antigen retrieval with Tris-EDTA buffer (pH 9.0).