

For Research Use Only

CIN85 Polyclonal antibody, PBS Only

Catalog Number: 12132-1-PBS

Featured Product



Basic Information

Catalog Number:

12132-1-PBS

Size:

100ug, Concentration: 1 mg/ml by Nanodrop;

Source:

Rabbit

Isotype:

IgG

Immunogen Catalog Number:

AG2777

GenBank Accession Number:

BC015806

GeneID (NCBI):

30011

UNIPROT ID:

Q96B97

Full Name:

SH3-domain kinase binding protein 1

Calculated MW:

665 aa, 73 kDa

Observed MW:

85 kDa

Purification Method:

Antigen affinity purification

Applications

Tested Applications:

WB, IHC, Indirect ELISA

Species Specificity:

human, mouse

Background Information

CIN85 is identified as a Cbl-interacting protein of 85 kDa and belongs to adaptor/scaffold proteins. It composed of three N-terminal SH3 domains followed by a proline-rich region and a C-terminal coiled-coil region. In association with c-Cbl (Casitas B-lineage lymphoma), an E3 ubiquitin ligase. As an adaptor protein, CIN85 is involved in Cbl-dependent EGFR internalization, intracellular receptor trafficking, sorting and degradation. Moreover, through the SH3 domains and the proline-rich region, CIN85 is implicated in many protein-protein interactions and it is found to play important roles in other processes such as apoptosis, rearrangement of actin cytoskeleton, cell adhesion, immunological synapse, cell migration and invasion.

Storage

Storage:

Store at -80°C.

Storage Buffer:

PBS Only

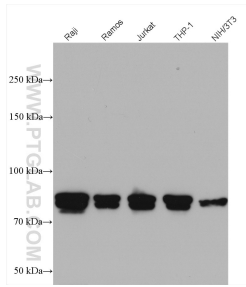
For technical support and original validation data for this product please contact:

T: 1 (888) 4PTGLAB (1-888-478-4522) (toll free in USA), or 1(312) 455-8498 (outside USA)

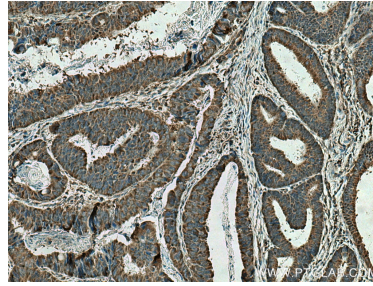
E: proteintech@ptglab.com
W: ptglab.com

This product is exclusively available under Proteintech Group brand and is not available to purchase from any other manufacturer.

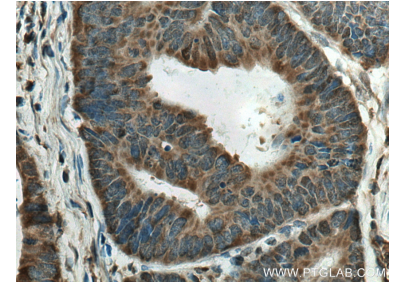
Selected Validation Data



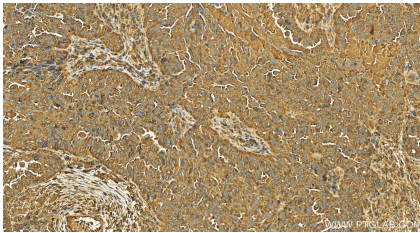
Various lysates were subjected to SDS PAGE followed by western blot with 12132-1-AP (CIN85 antibody) at dilution of 1:5000 incubated at room temperature for 1.5 hours. This data was developed using the same antibody clone with 12132-1-PBS in a different storage buffer formulation.



Immunohistochemical analysis of paraffin-embedded human colon cancer tissue slide using 12132-1-AP (CIN85 antibody) at dilution of 1:200 (under 10x lens). Heat mediated antigen retrieval with Tris-EDTA buffer (pH 9.0). This data was developed using the same antibody clone with 12132-1-PBS in a different storage buffer formulation.



Immunohistochemical analysis of paraffin-embedded human colon cancer tissue slide using 12132-1-AP (CIN85 antibody) at dilution of 1:200 (under 40x lens). Heat mediated antigen retrieval with Tris-EDTA buffer (pH 9.0). This data was developed using the same antibody clone with 12132-1-PBS in a different storage buffer formulation.



Immunohistochemical analysis of paraffin-embedded human ovary cancer tissue slide using 12132-1-AP (CIN85 antibody) at dilution of 1:200 (under 20x lens). Heat mediated antigen retrieval with Tris-EDTA buffer (pH 9.0). This data was developed using the same antibody clone with 12132-1-PBS in a different storage buffer formulation.