

For Research Use Only

KIF2C Polyclonal antibody

Catalog Number: 12139-1-AP

7 Publications



Basic Information

Catalog Number:

12139-1-AP

Size:

150ul , Concentration: 133 µg/ml by Bradford method using BSA as the standard;

Source:

Rabbit

Isotype:

IgG

Immunogen Catalog Number:

AG2786

GenBank Accession Number:

BC014924

GeneID (NCBI):

11004

UNIPROT ID:

Q99661

Full Name:

kinesin family member 2C

Calculated MW:

725 aa, 81 kDa

Observed MW:

81 kDa

Purification Method:

Antigen affinity purification

Recommended Dilutions:

IP 0.5-4.0 ug for 1.0-3.0 mg of total protein lysate
IF/ICC 1:20-1:200

Applications

Tested Applications:

IP, IF, ELISA

Cited Applications:

WB, IHC, IF

Species Specificity:

human, mouse, rat

Cited Species:

human, mouse

Positive Controls:

IP : mouse testis tissue,

IF/ICC : HeLa cells,

Notable Publications

Author	Pubmed ID	Journal	Application
Ran Wei	34568334	Front Cell Dev Biol	IF
Lanfen An	34650608	Stem Cells Int	WB,IHC
Rui-Chao Chai	31157866	Carcinogenesis	

Storage

Storage:

Store at -20°C. Stable for one year after shipment.

Storage Buffer:

PBS with 0.02% sodium azide and 50% glycerol pH 7.3.

Aliquoting is unnecessary for -20°C storage

*** 20ul sizes contain 0.1% BSA

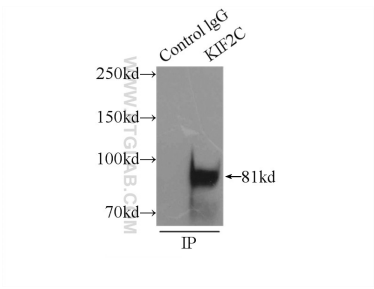
For technical support and original validation data for this product please contact:

T: 1 (888) 4PTGLAB (1-888-478-4522) (toll free in USA), or 1(312) 455-8498 (outside USA)

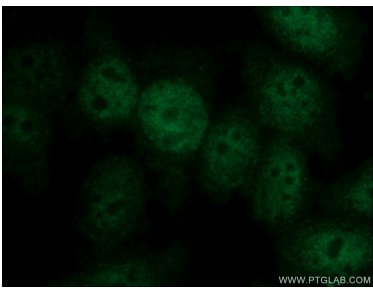
E: proteintech@ptglab.com
W: ptglab.com

This product is exclusively available under Proteintech Group brand and is not available to purchase from any other manufacturer.

Selected Validation Data



IP result of anti-KIF2C (IP:12139-1-AP, 3ug;
Detection:12139-1-AP 1:500) with mouse testis
tissue lysate 8000ug.



Immunofluorescent analysis of HeLa cells using
12139-1-AP (KIF2C antibody) at dilution of 1:50 and
Alexa Fluor 488-conjugated Goat Anti-Rabbit
IgG(H+L).