

For Research Use Only

# NCKAP1 Polyclonal antibody, PBS Only

Catalog Number: 12140-1-PBS



## Basic Information

<b>Catalog Number:</b> 12140-1-PBS	<b>GenBank Accession Number:</b> BC015025	<b>Purification Method:</b> Antigen affinity purification
<b>Size:</b> 100ug, Concentration: 1 mg/ml by Nanodrop;	<b>GeneID (NCBI):</b> 10787	
<b>Source:</b> Rabbit	<b>UNIPROT ID:</b> Q9Y2A7	
<b>Isotype:</b> IgG	<b>Full Name:</b> NCK-associated protein 1	
<b>Immunogen Catalog Number:</b> AG2788	<b>Calculated MW:</b> 129 kDa	
	<b>Observed MW:</b> 115-125 kDa	

## Applications

**Tested Applications:**  
WB, IHC, IF/ICC, IF-P, Indirect ELISA

**Species Specificity:**  
human, mouse, rat

## Background Information

NCK-associated protein 1 (NCKAP1), also known as NAP1 or HEM2, is encoded by an apoptosis-related gene human NAP1, the expression of which is strongly down-regulated in sporadic Alzheimer's disease (AD). Human NAP1 is predominantly expressed in neuronal cells. Antisense oligo DNA of human NAP1 transcripts was found to induce apoptosis of neuronal cells. Loss of NAP1 function disrupts neuronal differentiation. Likewise, NAP1 plays an essential role in facilitating neuronal cytoskeletal changes underlying the postmigratory differentiation of cortical neurons, a critical step in functional wiring of the cortex. Human NAP1 is also proved to be an orthologue of rat Nap1 which binds to the adaptor molecule NCK in signal transduction.

## Storage

**Storage:**  
Store at -80°C.

**Storage Buffer:**  
PBS only, pH7.3

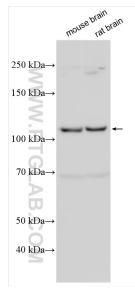
For technical support and original validation data for this product please contact:

T: 1 (888) 4PTGLAB (1-888-478-4522) (toll free  
in USA), or 1(312) 455-8498 (outside USA)

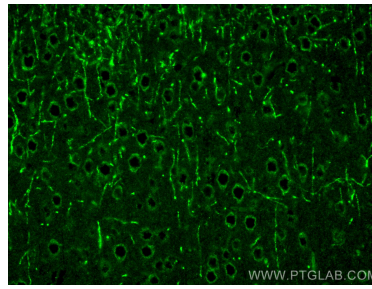
E: [proteintech@ptglab.com](mailto:proteintech@ptglab.com)  
W: [ptglab.com](http://ptglab.com)

**This product is exclusively available under Proteintech Group brand and is not available to purchase from any other manufacturer.**

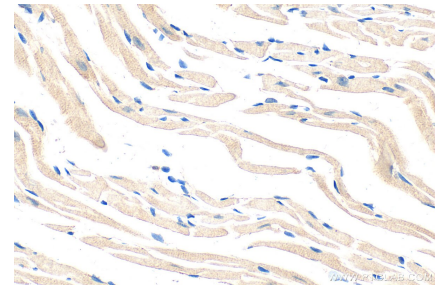
## Selected Validation Data



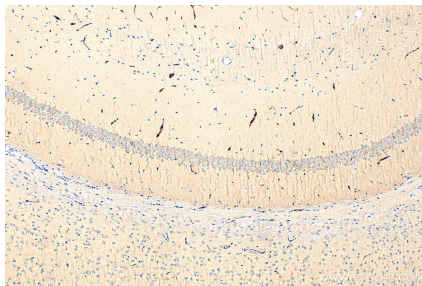
Various lysates were subjected to SDS PAGE followed by western blot with 12140-1-AP (NCKAP1 antibody) at dilution of 1:8000 incubated at room temperature for 1.5 hours. This data was developed using the same antibody clone with 12140-1-PBS in a different storage buffer formulation.



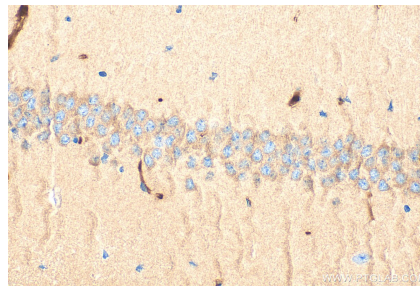
Immunofluorescent analysis of (4% PFA) fixed mouse brain tissue using NCKAP1 antibody (12140-1-AP) at dilution of 1:200 and CoraLite®488-Conjugated AffiniPure Goat Anti-Rabbit IgG(H+L). This data was developed using the same antibody clone with 12140-1-PBS in a different storage buffer formulation.



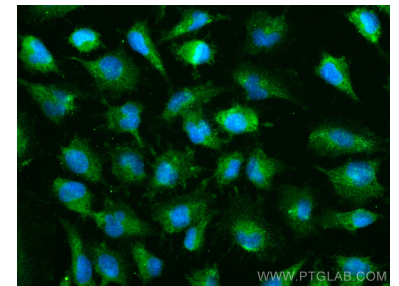
Immunohistochemical analysis of paraffin-embedded mouse heart tissue slide using 12140-1-AP (NCKAP1 antibody) at dilution of 1:200 (under 40x lens). Heat mediated antigen retrieval with Tris-EDTA buffer (pH 9.0). This data was developed using the same antibody clone with 12140-1-PBS in a different storage buffer formulation.



Immunohistochemical analysis of paraffin-embedded mouse brain tissue slide using 12140-1-AP (NCKAP1 antibody) at dilution of 1:200 (under 10x lens). Heat mediated antigen retrieval with Tris-EDTA buffer (pH 9.0). This data was developed using the same antibody clone with 12140-1-PBS in a different storage buffer formulation.



Immunohistochemical analysis of paraffin-embedded mouse brain tissue slide using 12140-1-AP (NCKAP1 antibody) at dilution of 1:200 (under 40x lens). Heat mediated antigen retrieval with Tris-EDTA buffer (pH 9.0). This data was developed using the same antibody clone with 12140-1-PBS in a different storage buffer formulation.



Immunofluorescent analysis of (-20°C Ethanol) fixed U-251 cells using NCKAP1 antibody (12140-1-AP) at dilution of 1:400 and CoraLite®488-Conjugated AffiniPure Goat Anti-Rabbit IgG(H+L) (SA00013-2). This data was developed using the same antibody clone with 12140-1-PBS in a different storage buffer formulation.