

For Research Use Only

# CCBL1/KAT1 Polyclonal antibody

Catalog Number: 12156-1-AP

12 Publications



## Basic Information

Catalog Number:

12156-1-AP

Size:

150ul, Concentration: 400 µg/ml by Nanodrop and 233 µg/ml by Bradford method using BSA as the standard;

Source:

Rabbit

Isotype:

IgG

Immunogen Catalog Number:

AG2828

GenBank Accession Number:

BC013069

GeneID (NCBI):

883

UNIPROT ID:

Q16773

Full Name:

cysteine conjugate-beta lyase,

cytoplasmic

Calculated MW:

48 kDa

Observed MW:

48-50 kDa

Purification Method:

Antigen affinity purification

Recommended Dilutions:

WB 1:500-1:1000

IF/ICC 1:50-1:500

## Applications

Tested Applications:

WB, IF, ELISA

Cited Applications:

WB, IHC

Species Specificity:

human, mouse, rat

Cited Species:

human, mouse, rat

Positive Controls:

WB : mouse kidney tissue, HeLa cells, L02 cells

IF/ICC : HeLa cells,

## Background Information

CCBL1 encodes kynurenine aminotransferase 1 (KAT1), a key enzyme involved in kynurenine pathway. CCBL1 catalyzes the production of kynurenic acid, a powerful endogenous excitatory amino acid receptor antagonist that is widely regarded as the potent neuroprotective agent.

## Notable Publications

Author	Pubmed ID	Journal	Application
Leandro Z Agudelo	25259918	Cell	WB
Chongye Fang	33790369	Sci Rep	WB
Maja Schlittler	27030575	Am J Physiol Cell Physiol	

## Storage

Storage:

Store at -20°C. Stable for one year after shipment.

Storage Buffer:

PBS with 0.02% sodium azide and 50% glycerol pH 7.3.

Aliquoting is unnecessary for -20°C storage

\*\*\* 20ul sizes contain 0.1% BSA

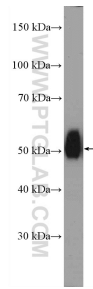
For technical support and original validation data for this product please contact:

T: 1 (888) 4PTGLAB (1-888-478-4522) (toll free in USA), or 1(312) 455-8498 (outside USA)

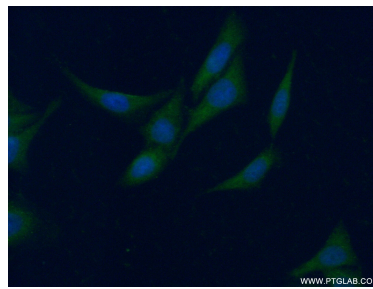
E: [proteintech@ptglab.com](mailto:proteintech@ptglab.com)  
W: [ptglab.com](http://ptglab.com)

This product is exclusively available under Proteintech Group brand and is not available to purchase from any other manufacturer.

## Selected Validation Data



mouse kidney tissue were subjected to SDS PAGE followed by western blot with 12156-1-AP (CCBL1/KAT1 antibody at dilution of 1:600 incubated at room temperature for 1.5 hours.



Immunofluorescent analysis of (-20°C Ethanol) fixed HeLa cells using 12156-1-AP (CCBL1/KAT1 antibody) at dilution of 1:50 and Alexa Fluor 488-conjugated Goat Anti-Rabbit IgG(H+L).