

For Research Use Only

PAR2 Polyclonal antibody, PBS Only

Catalog Number: 12160-1-PBS

Featured Product



Basic Information

Catalog Number:

12160-1-PBS

Size:

100ug, Concentration: 1 mg/ml by Nanodrop;

Source:

Rabbit

Isotype:

IgG

Immunogen Catalog Number:

AG2801

GenBank Accession Number:

BC018130

GeneID (NCBI):

2150

UNIPROT ID:

P55085

Full Name:

coagulation factor II (thrombin) receptor-like 1

Calculated MW:

397 aa, 44 kDa

Observed MW:

50-55 kDa

Purification Method:

Antigen affinity purification

Applications

Tested Applications:

WB, IF/ICC, Indirect ELISA

Species Specificity:

human

Background Information

Proteinase-activated receptors (PARs) are G protein-coupled receptors activated through cleavage of their N-termini by mainly serine proteases. The family of PARs includes four members: PAR1, PAR2, PAR3, and PAR4. PAR2, also known as F2RL1, is expressed in epithelial cells (e.g., lung, gastrointestinal tract), endothelial cells, smooth muscle cells, fibroblasts, nerves, and some immune and inflammatory cells. PAR2 knockout mice and PAR2 agonists and antagonists have implicated PAR2 as a promising target in inflammatory conditions; respiratory, gastrointestinal, metabolic, cardiovascular, and neurological dysfunction; and cancers. (PMID:23895492)

Storage

Storage:

Store at -80°C.

Storage Buffer:

PBS only, pH7.3

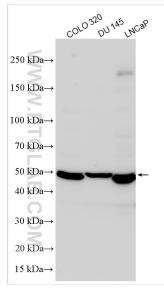
For technical support and original validation data for this product please contact:

T: 1 (888) 4PTGLAB (1-888-478-4522) (toll free in USA), or 1(312) 455-8498 (outside USA)

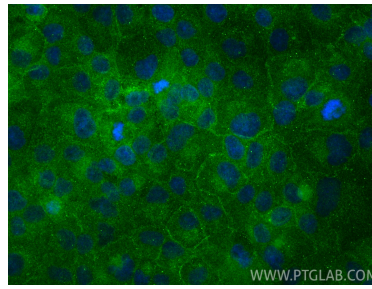
E: proteintech@ptglab.com
W: ptglab.com

This product is exclusively available under Proteintech Group brand and is not available to purchase from any other manufacturer.

Selected Validation Data



Various lysates were subjected to SDS PAGE followed by western blot with 12160-1-AP (PAR2 antibody) at dilution of 1:2000 incubated at room temperature for 1.5 hours. This data was developed using the same antibody clone with 12160-1-PBS in a different storage buffer formulation.



Immunofluorescent analysis of (-20°C Ethanol) fixed DU 145 cells using PAR2 antibody (12160-1-AP) at dilution of 1:200 and CoraLite® 488-Conjugated Goat Anti-Rabbit IgG(H+L) (SA00013-2). This data was developed using the same antibody clone with 12160-1-PBS in a different storage buffer formulation.