

For Research Use Only

GOPC Polyclonal antibody

Catalog Number: 12163-1-AP **1 Publications**



Basic Information

Catalog Number: 12163-1-AP	GenBank Accession Number: BC009553	Purification Method: Antigen affinity purification
Size: 150ul , Concentration: 450 µg/ml by Nanodrop and 267 µg/ml by Bradford method using BSA as the standard;	GeneID (NCBI): 57120	Recommended Dilutions: WB 1:500-1:2000 IHC 1:20-1:200 IF 1:50-1:500
Source: Rabbit	Full Name: golgi associated PDZ and coiled-coil motif containing	
Isotype: IgG	Calculated MW: 454 aa, 50 kDa	
Immunogen Catalog Number: AG2804	Observed MW: 50-55 kDa	

Applications

Tested Applications: IF, IHC, WB, ELISA	Positive Controls: WB : HepG2 cells, PC-3 cells, mouse colon
Cited Applications: WB	IHC : human pancreas cancer tissue,
Species Specificity: human, mouse, rat	IF : HEK-293T cells, HEK-293 cells
Cited Species: human, mouse	

Note-IHC: suggested antigen retrieval with TE buffer pH 9.0; (*) Alternatively, antigen retrieval may be performed with citrate buffer pH 6.0

Background Information

GOPC (FIG/PIST/CAL) is a PDZ-domain scaffolding protein that regulates the trafficking of many integral membrane proteins, including cell surface receptors, ion channels and adhesion molecules. GOPC localizes to the trans-Golgi network (TGN) but not to the cis- or trans-Golgi cisternae, thus anti-GOPC can be used to label the TGN structure.

Notable Publications

Author	Pubmed ID	Journal	Application
Lixiao Zhou	35381522	Environ Int	WB

Storage

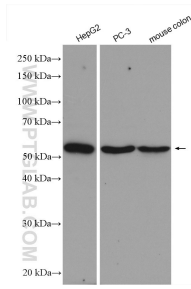
Storage:
Store at -20°C. Stable for one year after shipment.
Storage Buffer:
PBS with 0.02% sodium azide and 50% glycerol pH 7.3.
Aliquoting is unnecessary for -20°C storage

***** 20ul sizes contain 0.1% BSA**

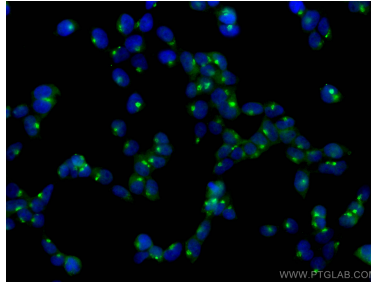
For technical support and original validation data for this product please contact:
T: 1 (888) 4PTGLAB (1-888-478-4522) (toll free in USA), or 1(312) 455-8498 (outside USA)
E: proteintech@ptglab.com
W: ptglab.com

This product is exclusively available under Proteintech Group brand and is not available to purchase from any other manufacturer.

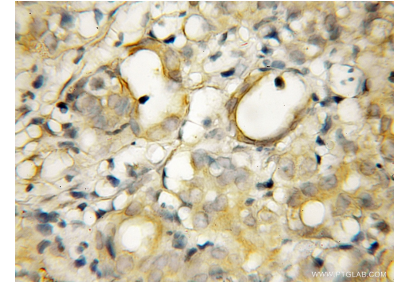
Selected Validation Data



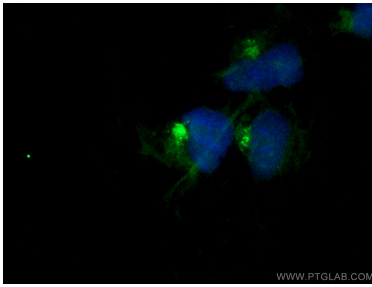
Various lysates were subjected to SDS PAGE followed by western blot with 12163-1-AP (GOPC antibody) at dilution of 1:1000 incubated at room temperature for 1.5 hours.



Immunofluorescent analysis of (4% PFA) fixed HEK-293T cells using GOPC antibody (12163-1-AP) at dilution of 1:200 and CoraLite®488-Conjugated AffiniPure Goat Anti-Rabbit IgG(H+L).



Immunohistochemical analysis of paraffin-embedded human pancreas cancer using 12163-1-AP (GOPC antibody) at dilution of 1:50 (under 10x lens).



Immunofluorescent analysis of (4% PFA) fixed HEK-293 cells using GOPC antibody (12163-1-AP) at dilution of 1:400 and CoraLite®488-Conjugated AffiniPure Goat Anti-Rabbit IgG(H+L).