

For Research Use Only

GOPC Polyclonal antibody, PBS Only

Catalog Number: 12163-1-PBS



Basic Information

Catalog Number:

12163-1-PBS

Size:

100ug, Concentration: 1 mg/ml by Nanodrop;

Source:

Rabbit

Isotype:

IgG

Immunogen Catalog Number:

AG2804

GenBank Accession Number:

BC009553

GeneID (NCBI):

57120

UNIPROT ID:

Q9HD26

Full Name:

golgi associated PDZ and coiled-coil motif containing

Calculated MW:

454 aa, 50 kDa

Observed MW:

50-55 kDa

Purification Method:

Antigen affinity purification

Applications

Tested Applications:

WB, IHC, IF/ICC, Indirect ELISA

Species Specificity:

human, mouse, rat

Background Information

GOPC (FIG/PIST/CAL) is a PDZ-domain scaffolding protein that regulates the trafficking of many integral membrane proteins, including cell surface receptors, ion channels and adhesion molecules. GOPC localizes to the trans-Golgi network (TGN) but not to the cis- or trans-Golgi cisternae, thus anti-GOPC can be used to label the TGN structure.

Storage

Storage:

Store at -80°C.

Storage Buffer:

PBS only, pH7.3

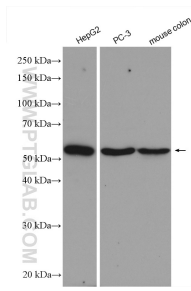
For technical support and original validation data for this product please contact:

T: 1 (888) 4PTGLAB (1-888-478-4522) (toll free in USA), or 1(312) 455-8498 (outside USA)

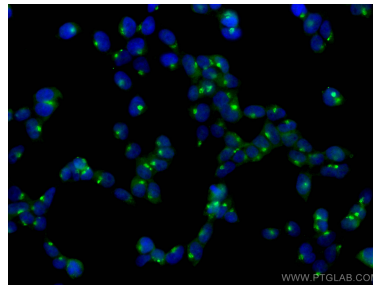
E: proteintech@ptglab.com
W: ptglab.com

This product is exclusively available under Proteintech Group brand and is not available to purchase from any other manufacturer.

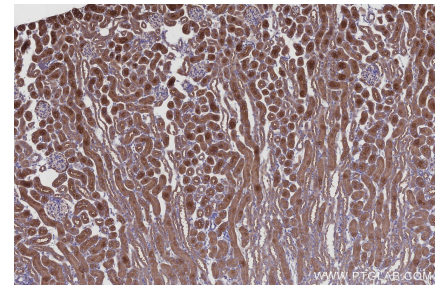
Selected Validation Data



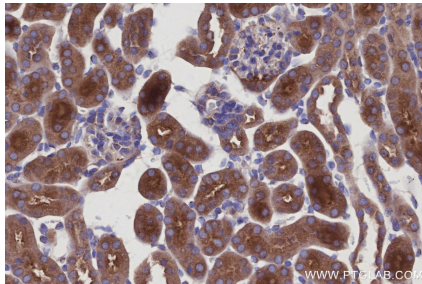
Various lysates were subjected to SDS PAGE followed by western blot with 12163-1-AP (GOPC antibody) at dilution of 1:1000 incubated at room temperature for 1.5 hours. This data was developed using the same antibody clone with 12163-1-PBS in a different storage buffer formulation.



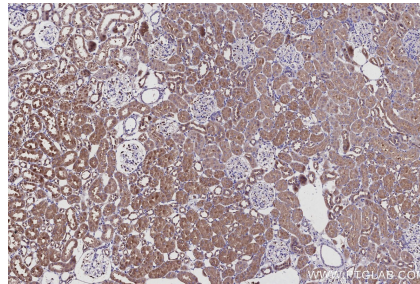
Immunofluorescent analysis of (4% PFA) fixed HEK-293T cells using GOPC antibody (12163-1-AP) at dilution of 1:200 and Coralite®488-Conjugated AffiniPure Goat Anti-Rabbit IgG(H+L). This data was developed using the same antibody clone with 12163-1-PBS in a different storage buffer formulation.



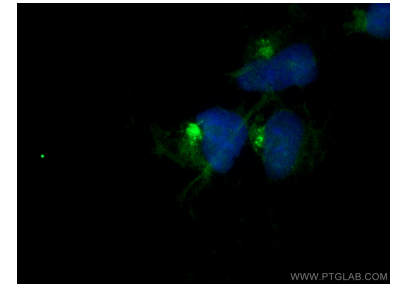
Immunohistochemical analysis of paraffin-embedded mouse kidney tissue slide using 12163-1-AP (GOPC antibody) at dilution of 1:500 (under 10x lens). Heat mediated antigen retrieval with Tris-EDTA buffer (pH 9.0). This data was developed using the same antibody clone with 12163-1-PBS in a different storage buffer formulation.



Immunohistochemical analysis of paraffin-embedded mouse kidney tissue slide using 12163-1-AP (GOPC antibody) at dilution of 1:500 (under 40x lens). Heat mediated antigen retrieval with Tris-EDTA buffer (pH 9.0). This data was developed using the same antibody clone with 12163-1-PBS in a different storage buffer formulation.



Immunohistochemical analysis of paraffin-embedded rat kidney tissue slide using 12163-1-AP (GOPC antibody) at dilution of 1:500 (under 10x lens). Heat mediated antigen retrieval with Tris-EDTA buffer (pH 9.0). This data was developed using the same antibody clone with 12163-1-PBS in a different storage buffer formulation.



Immunofluorescent analysis of (4% PFA) fixed HEK-293 cells using GOPC antibody (12163-1-AP) at dilution of 1:400 and Coralite®488-Conjugated AffiniPure Goat Anti-Rabbit IgG(H+L). This data was developed using the same antibody clone with 12163-1-PBS in a different storage buffer formulation.