

For Research Use Only

RPE Polyclonal antibody

Catalog Number: 12168-2-AP

Featured Product

2 Publications



Basic Information

Catalog Number:

12168-2-AP

Size:

150ul, Concentration: 550 ug/ml by Nanodrop and 267 ug/ml by Bradford method using BSA as the standard;

Source:

Rabbit

Isotype:

IgG

Immunogen Catalog Number:

AG2810

GenBank Accession Number:

BC016764

GeneID (NCBI):

6120

UNIPROT ID:

Q96AT9

Full Name:

ribulose-5-phosphate-3-epimerase

Calculated MW:

228 aa, 25 kDa

Observed MW:

25 kDa

Purification Method:

Antigen affinity purification

Recommended Dilutions:

WB 1:500-1:1500

IF/ICC 1:200-1:800

Applications

Tested Applications:

WB, IF/ICC, ELISA

Cited Applications:

WB

Species Specificity:

human, mouse, rat

Cited Species:

human

Positive Controls:

WB : HEK-293T cells, mouse thymus tissue, HeLa cells, K-562 cells

IF/ICC : RAW 264.7 cells,

Notable Publications

Author	Pubmed ID	Journal	Application
Owen S Skinner	37198474	Nat Metab	WB
Harry E Taylor	32579936	Cell Rep	WB

Storage

Storage:

Store at -20°C. Stable for one year after shipment.

Storage Buffer:

PBS with 0.02% sodium azide and 50% glycerol pH 7.3.

Aliquoting is unnecessary for -20°C storage

*** 20ul sizes contain 0.1% BSA

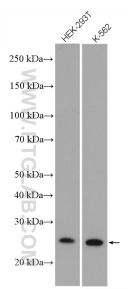
For technical support and original validation data for this product please contact:

T: 1 (888) 4PTGLAB (1-888-478-4522) (toll free in USA), or 1(312) 455-8498 (outside USA)

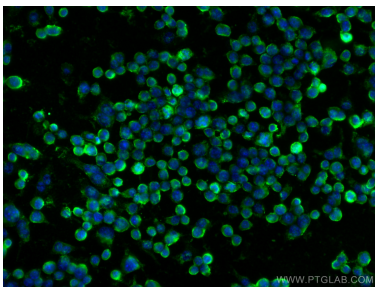
E: proteintech@ptglab.com
W: ptglab.com

This product is exclusively available under Proteintech Group brand and is not available to purchase from any other manufacturer.

Selected Validation Data



HEK-293T cells were subjected to SDS PAGE followed by western blot with 12168-2-AP (RPE antibody) at dilution of 1:1000 incubated at room temperature for 1.5 hours.



Immunofluorescent analysis of (-20°C Ethanol) fixed RAW 264.7 cells using RPE antibody (12168-2-AP) at dilution of 1:400 and CoraLite® 488-Conjugated Goat Anti-Rabbit IgG(H+L).