

For Research Use Only

RTF1 Polyclonal antibody

Catalog Number: 12170-1-AP **3 Publications**



Basic Information

Catalog Number: 12170-1-AP	GenBank Accession Number: BC015052	Purification Method: Antigen affinity purification
Size: 150ul, Concentration: 900 µg/ml by Nanodrop and 400 µg/ml by Bradford method using BSA as the standard;	GeneID (NCBI): 23168	Recommended Dilutions: WB 1:500-1:3000 IP 0.5-4.0 µg for 1.0-3.0 mg of total protein lysate IHC 1:50-1:500
Source: Rabbit	Full Name: Rtf1, Paf1/RNA polymerase II complex component, homolog (S. cerevisiae)	
Isotype: IgG	Calculated MW: 585aa,67 kDa; 710aa,80 kDa	
Immunogen Catalog Number: AG2812	Observed MW: 100 kDa	

Applications

Tested Applications: IHC, IP, WB, ELISA	Positive Controls: WB : MCF-7 cells, HL-60 cells, rat brain tissue, mouse brain tissue IP : HeLa cells, IHC : human prostate cancer tissue,
Cited Applications: IP, WB	
Species Specificity: human, mouse, rat	
Cited Species: human, mouse	
Note-IHC: suggested antigen retrieval with TE buffer pH 9.0; (*) Alternatively, antigen retrieval may be performed with citrate buffer pH 6.0	

Background Information

Notable Publications

Author	Pubmed ID	Journal	Application
Paul Adrian Ginno	30279501	Nat Commun	WB
Gang Xiang	35551175	Cell Death Dis	WB
Jiawei Zhao	38218188	Cell	WB,IP

Storage

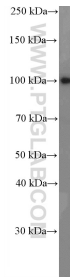
Storage:
Store at -20°C. Stable for one year after shipment.
Storage Buffer:
PBS with 0.02% sodium azide and 50% glycerol pH 7.3.
Aliquoting is unnecessary for -20°C storage

*** 20ul sizes contain 0.1% BSA

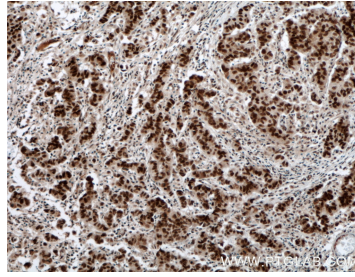
For technical support and original validation data for this product please contact:
T: 1 (888) 4PTGLAB (1-888-478-4522) (toll free in USA), or 1(312) 455-8498 (outside USA) E: proteintech@ptglab.com W: ptglab.com

This product is exclusively available under Proteintech Group brand and is not available to purchase from any other manufacturer.

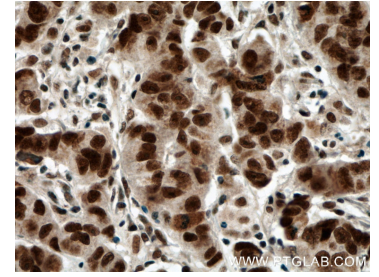
Selected Validation Data



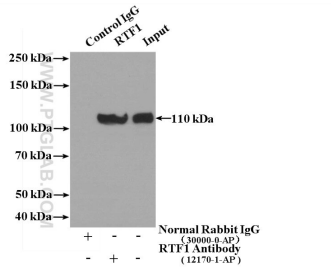
MCF-7 cells were subjected to SDS PAGE followed by western blot with 12170-1-AP (RTF1 antibody) at dilution of 1:1500 incubated at room temperature for 1.5 hours.



Immunohistochemical analysis of paraffin-embedded human prostate cancer tissue slide using 12170-1-AP (RTF1 antibody) at dilution of 1:200 (under 10x lens). Heat mediated antigen retrieval with Tris-EDTA buffer (pH 9.0).



Immunohistochemical analysis of paraffin-embedded human prostate cancer tissue slide using 12170-1-AP (RTF1 antibody) at dilution of 1:200 (under 40x lens). Heat mediated antigen retrieval with Tris-EDTA buffer (pH 9.0).



IP Result of anti-RTF1 (IP:12170-1-AP, 4ug;
Detection:12170-1-AP 1:500) with HeLa cells lysate 2400ug.