

For Research Use Only

# RTF1 Polyclonal antibody, PBS Only

Catalog Number:12170-1-PBS



## Basic Information

**Catalog Number:**

12170-1-PBS

**Size:**

100ug , Concentration: 1 mg/ml by Nanodrop;

**Source:**

Rabbit

**Isotype:**

IgG

**Immunogen Catalog Number:**

AG2812

**GenBank Accession Number:**

BC015052

**GeneID (NCBI):**

23168

**UNIPROT ID:**

Q92541

**Full Name:**

Rtf1, Paf1/RNA polymerase II complex component, homolog (S. cerevisiae)

**Calculated MW:**

585aa,67 kDa; 710aa,80 kDa

**Observed MW:**

100 kDa

**Purification Method:**

Antigen affinity purification

## Applications

**Tested Applications:**

WB, IHC, IP, Indirect ELISA

**Species Specificity:**

human, mouse, rat

## Background Information

RTF1 (RNA polymerase-associated protein RTF1 homolog) is a multifunctional component of the Paf1 complex that regulates gene expression by directing cotranscriptional histone modification (PMID: 17576814). RTF1 is essential for global methylation of H3-Lys4 and H3-Lys79, but not H3-Lys36 (PMID: 12876293).

## Storage

**Storage:**

Store at -80°C.

**Storage Buffer:**

PBS only, pH7.3

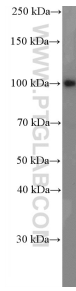
For technical support and original validation data for this product please contact:

T: 1 (888) 4PTGLAB (1-888-478-4522) (toll free in USA), or 1(312) 455-8498 (outside USA)

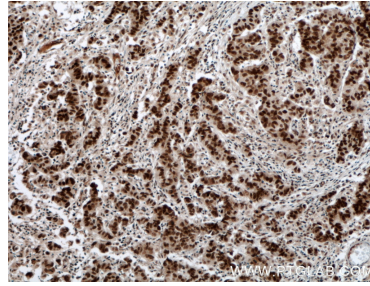
E: [proteintech@ptglab.com](mailto:proteintech@ptglab.com)  
W: [ptglab.com](http://ptglab.com)

**This product is exclusively available under Proteintech Group brand and is not available to purchase from any other manufacturer.**

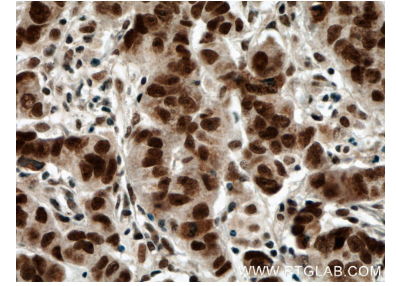
## Selected Validation Data



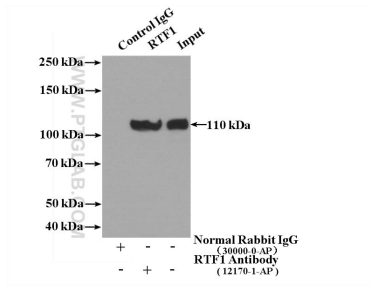
MCF-7 cells were subjected to SDS PAGE followed by western blot with 12170-1-AP (RTF1 antibody) at dilution of 1:1500 incubated at room temperature for 1.5 hours. This data was developed using the same antibody clone with 12170-1-PBS in a different storage buffer formulation.



Immunohistochemical analysis of paraffin-embedded human prostate cancer tissue slide using 12170-1-AP (RTF1 antibody) at dilution of 1:200 (under 10x lens. Heat mediated antigen retrieval with Tris-EDTA buffer (pH 9.0). This data was developed using the same antibody clone with 12170-1-PBS in a different storage buffer formulation.



Immunohistochemical analysis of paraffin-embedded human prostate cancer tissue slide using 12170-1-AP (RTF1 antibody) at dilution of 1:200 (under 40x lens. Heat mediated antigen retrieval with Tris-EDTA buffer (pH 9.0). This data was developed using the same antibody clone with 12170-1-PBS in a different storage buffer formulation.



IP result of anti-RTF1 (IP:12170-1-AP, 4ug; Detection:12170-1-AP 1:500) with HeLa cells lysate 2400ug. This data was developed using the same antibody clone with 12170-1-PBS in a different storage buffer formulation.