

For Research Use Only

FKBP10/FKBP65 Polyclonal antibody, PBS Only

Catalog Number: 12172-1-PBS

Featured Product



Basic Information

Catalog Number:

12172-1-PBS

Size:

100ug, Concentration: 1 mg/ml by
Nanodrop;

Source:

Rabbit

Isotype:

IgG

Immunogen Catalog Number:

AG2814

GenBank Accession Number:

BC016467

GeneID (NCBI):

60681

UNIPROT ID:

Q96AY3

Full Name:

FK506 binding protein 10, 65 kDa

Calculated MW:

582 aa, 64 kDa

Observed MW:

64 kDa

Purification Method:

Antigen affinity purification

Applications

Tested Applications:

WB, IHC, IP, Indirect ELISA

Species Specificity:

human, mouse

Background Information

FKBP10, also known as FKBP65, is a 65 kDa FK506 binding protein that is a member of the FKBP-type peptidyl-prolyl cis/trans isomerase family. This protein localizes to the endoplasmic reticulum and acts as a molecular chaperone and binding partner of type I collagen. FKBP65 is expressed in developing tissues and re-expressed in adult tissues following injury. As documented, FKBP10 has been detected to play important roles in the initiation and progression of cancers.

Storage

Storage:

Store at -80°C.

Storage Buffer:

PBS Only

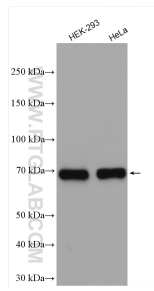
For technical support and original validation data for this product please contact:

T: 1 (888) 4PTGLAB (1-888-478-4522) (toll free
in USA), or 1(312) 455-8498 (outside USA)

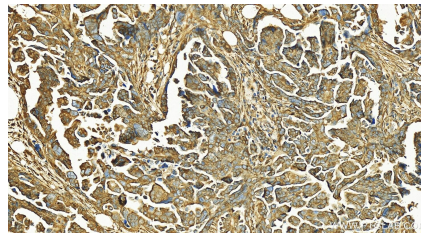
E: proteintech@ptglab.com
W: ptglab.com

This product is exclusively available under Proteintech Group brand and is not available to purchase from any other manufacturer.

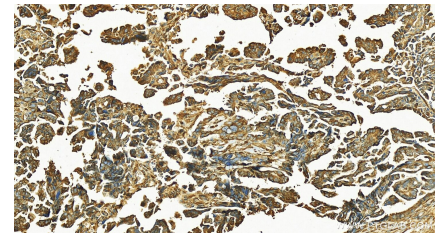
Selected Validation Data



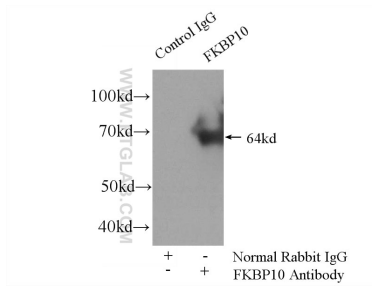
Various lysates were subjected to SDS PAGE followed by western blot with 12172-1-AP (FKBP65 antibody) at dilution of 1:8000 incubated at room temperature for 1.5 hours. This data was developed using the same antibody clone with 12172-1-PBS in a different storage buffer formulation.



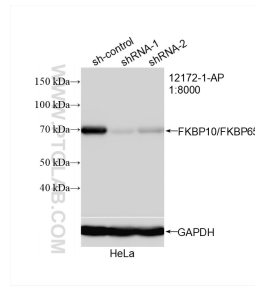
Immunohistochemical analysis of paraffin-embedded human ovarian cancer slide using 12172-1-AP (FKBP10/FKBP65 antibody) at dilution of 1:200 (under 20x lens). Heat mediated antigen retrieval with Tris-EDTA buffer (pH 9.0). This data was developed using the same antibody clone with 12172-1-PBS in a different storage buffer formulation.



Immunohistochemical analysis of paraffin-embedded human ovarian cancer slide using 12172-1-AP (FKBP10/FKBP65 antibody) at dilution of 1:200 (under 20x lens). Heat mediated antigen retrieval with Tris-EDTA buffer (pH 9.0). This data was developed using the same antibody clone with 12172-1-PBS in a different storage buffer formulation.



IP result of anti-FKBP10/FKBP65 (IP:12172-1-AP, 4ug; Detection:12172-1-AP 1:600) with HEK-293 cells lysate 2800ug. This data was developed using the same antibody clone with 12172-1-PBS in a different storage buffer formulation.



WB result of FKBP10/FKBP65 antibody (12172-1-AP; 1:8000; incubated at room temperature for 1.5 hours) with sh-Control and sh-FKBP10/FKBP65 transfected HeLa cells. This data was developed using the same antibody clone with 12172-1-PBS in a different storage buffer formulation.