

For Research Use Only

SMNDC1 Polyclonal antibody

Catalog Number: 12178-1-AP



Basic Information

Catalog Number: 12178-1-AP	GenBank Accession Number: BC011234	Purification Method: Antigen affinity purification
Size: 150ul , Concentration: 850 µg/ml by Nanodrop and 400 µg/ml by Bradford method using BSA as the standard;	GeneID (NCBI): 10285	Recommended Dilutions: WB 1:1000-1:3000 IHC 1:50-1:500 IF 1:50-1:500
Source: Rabbit	Full Name: survival motor neuron domain containing 1	
Isotype: IgG	Calculated MW: 238 aa, 27 kDa	
Immunogen Catalog Number: AG2822	Observed MW: 32 kDa	

Applications

Tested Applications:

IF, IHC, WB, ELISA

Species Specificity:

human, mouse, rat

Note-IHC: suggested antigen retrieval with TE buffer pH 9.0; (*) Alternatively, antigen retrieval may be performed with citrate buffer pH 6.0

Positive Controls:

WB: mouse heart tissue, human heart tissue, human lung tissue, human liver tissue, mouse skeletal muscle tissue, rat heart tissue

IHC: human lymphoma tissue,

IF: HepG2 cells,

Background Information

Storage

Storage:

Store at -20°C. Stable for one year after shipment.

Storage Buffer:

PBS with 0.02% sodium azide and 50% glycerol pH 7.3.

Aliquoting is unnecessary for -20°C storage

*** 20ul sizes contain 0.1% BSA

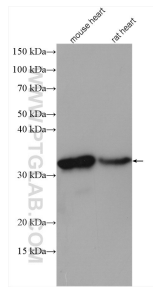
For technical support and original validation data for this product please contact:

T: 1 (888) 4PTGLAB (1-888-478-4522) (toll free in USA), or 1(312) 455-8498 (outside USA)

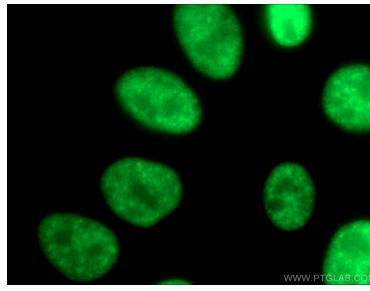
E: proteintech@ptglab.com
W: ptglab.com

This product is exclusively available under Proteintech Group brand and is not available to purchase from any other manufacturer.

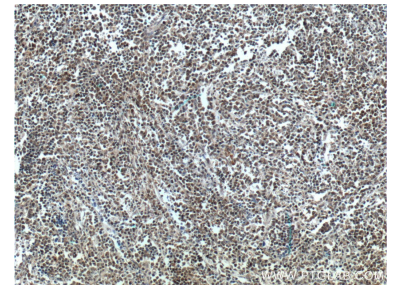
Selected Validation Data



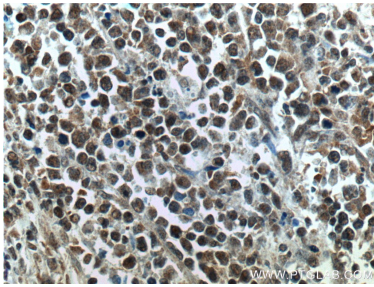
Various lysates were subjected to SDS PAGE followed by western blot with 12178-1-AP (SMNDC1 antibody) at dilution of 1:3000 incubated at room temperature for 1.5 hours.



Immunofluorescent analysis of (4% PFA) fixed HepG2 cells using 12178-1-AP (SMNDC1 antibody) at dilution of 1:50 and CoraLite488-Conjugated AffiniPure Goat Anti-Rabbit IgG(H+L).



Immunohistochemical analysis of paraffin-embedded human lymphoma tissue slide using 12178-1-AP (SMNDC1 Antibody) at dilution of 1:200 (under 10x lens).



Immunohistochemical analysis of paraffin-embedded human lymphoma tissue slide using 12178-1-AP (SMNDC1 Antibody) at dilution of 1:200 (under 40x lens).