

For Research Use Only

# SFRP2 Polyclonal antibody

Catalog Number: 12189-1-AP **7 Publications**



## Basic Information

<b>Catalog Number:</b> 12189-1-AP	<b>GenBank Accession Number:</b> BC008666	<b>Purification Method:</b> Antigen affinity purification
<b>Size:</b> 150ul , Concentration: 350 µg/ml by Nanodrop and 200 µg/ml by Bradford method using BSA as the standard;	<b>GeneID (NCBI):</b> 6423	<b>Recommended Dilutions:</b> WB 1:500-1:1000 IF 1:200-1:800
<b>Source:</b> Rabbit	<b>Full Name:</b> secreted frizzled-related protein 2	
<b>Isotype:</b> IgG	<b>Calculated MW:</b> 295 aa, 34 kDa	
<b>Immunogen Catalog Number:</b> AG2853	<b>Observed MW:</b> 33 kDa	

## Applications

<b>Tested Applications:</b> IF, WB, ELISA	<b>Positive Controls:</b> WB : rat heart tissue, mouse heart tissue IF : A549 cells,
<b>Cited Applications:</b> WB	
<b>Species Specificity:</b> human, mouse, rat	
<b>Cited Species:</b> human, mouse	

## Background Information

Secreted frizzled-related protein 2 (Sfrp2) is a secreted glycoprotein molecule containing an N terminal cysteine-rich domain, which is typically 30-50% identical to the putative Wnt-binding site of the frizzled receptor, and a C terminal heparin-binding domain with weak homology to netrins. It has been implicated in diverse cellular processes, including embryogenesis, regulation of cell apoptosis, and cell differentiation. Methylation of this gene is a potential marker for the presence of colorectal cancer.

## Notable Publications

Author	Pubmed ID	Journal	Application
Yue Ming	36327957	Psychiatry Investig	WB
Zhang Xiujun X	23554914	PLoS One	WB
Chenlin Zhou	26809499	Cell Res	WB

## Storage

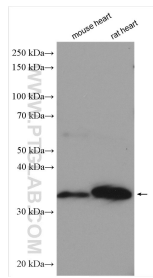
**Storage:**  
Store at -20°C. Stable for one year after shipment.  
**Storage Buffer:**  
PBS with 0.02% sodium azide and 50% glycerol pH 7.3.  
Aliquoting is unnecessary for -20°C storage

\*\*\* 20ul sizes contain 0.1% BSA

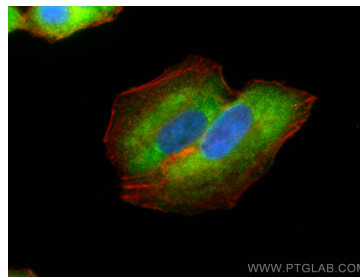
For technical support and original validation data for this product please contact:  
T: 1 (888) 4PTGLAB (1-888-478-4522) (toll free in USA), or 1(312) 455-8498 (outside USA)  
E: proteintech@ptglab.com  
W: ptglab.com

This product is exclusively available under Proteintech Group brand and is not available to purchase from any other manufacturer.

## Selected Validation Data



Various lysates were subjected to SDS PAGE followed by western blot with 12189-1-AP (SFRP2 antibody) at dilution of 1:600 incubated at room temperature for 1.5 hours.



Immunofluorescent analysis of (4% PFA) fixed A549 cells using SFRP2 antibody (12189-1-AP) at dilution of 1:400 and CoraLite®488-Conjugated AffiniPure Goat Anti-Rabbit IgG(H+L), CL594-phalloidin (red).