

For Research Use Only

# SPSB1 Polyclonal antibody, PBS Only

Catalog Number: 12194-1-PBS

Featured Product



## Basic Information

**Catalog Number:**

12194-1-PBS

**Size:**

100ug, Concentration: 1 mg/ml by Nanodrop;

**Source:**

Rabbit

**Isotype:**

IgG

**Immunogen Catalog Number:**

AG2832

**GenBank Accession Number:**

BC015711

**GeneID (NCBI):**

80176

**UNIPROT ID:**

Q96BD6

**Full Name:**

splA/ryanodine receptor domain and SOCS box containing 1

**Calculated MW:**

273 aa, 31 kDa

**Observed MW:**

40 kDa

**Purification Method:**

Antigen affinity purification

## Applications

**Tested Applications:**

WB, Indirect ELISA

**Species Specificity:**

human, mouse

## Background Information

SPSB1, also known as Single-stranded DNA binding protein 1 (SSB1), is a member of the single-stranded DNA binding protein (SSB) family. It plays a pivotal role in the DNA damage response. As an early responder, SSB1 promptly associates with exposed single-strand DNA to shield it from degradation by various nucleases present in the cellular milieu.

## Storage

**Storage:**

Store at -80°C.

**Storage Buffer:**

PBS only, pH7.3

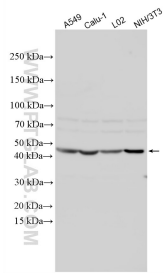
For technical support and original validation data for this product please contact:

T: 1 (888) 4PTGLAB (1-888-478-4522) (toll free in USA), or 1(312) 455-8498 (outside USA)

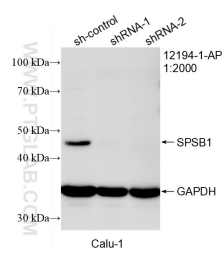
E: [proteintech@ptglab.com](mailto:proteintech@ptglab.com)  
W: [ptglab.com](http://ptglab.com)

This product is exclusively available under Proteintech Group brand and is not available to purchase from any other manufacturer.

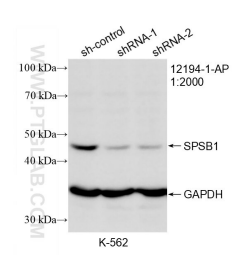
## Selected Validation Data



Various lysates were subjected to SDS PAGE followed by western blot with 12194-1-AP (SPSB1 antibody) at dilution of 1:2000 incubated at room temperature for 1.5 hours. This data was developed using the same antibody clone with 12194-1-PBS in a different storage buffer formulation.



WB result of SPSB1 antibody (12194-1-AP; 1:2000; incubated at room temperature for 1.5 hours) with sh-Control and sh-SPSB1 transfected Calu-1 cells. This data was developed using the same antibody clone with 12194-1-PBS in a different storage buffer formulation.



WB result of SPSB1 antibody (12194-1-AP; 1:2000; incubated at room temperature for 1.5 hours) with sh-Control and sh-SPSB1 transfected K-562 cells. This data was developed using the same antibody clone with 12194-1-PBS in a different storage buffer formulation.