

For Research Use Only

TOMM34 Polyclonal antibody

Catalog Number: 12196-1-AP

Featured Product

4 Publications



Basic Information

Catalog Number:

12196-1-AP

Size:

150ul, Concentration: 500 ug/ml by Nanodrop and 333 ug/ml by Bradford method using BSA as the standard;

Source:

Rabbit

Isotype:

IgG

Immunogen Catalog Number:

AG2834

GenBank Accession Number:

BC014907

GeneID (NCBI):

10953

UNIPROT ID:

Q15785

Full Name:

translocase of outer mitochondrial membrane 34

Calculated MW:

309 aa, 35 kDa

Observed MW:

31-35 kDa

Purification Method:

Antigen affinity purification

Recommended Dilutions:

WB 1:500-1:2000

IP 0.5-4.0 ug for 1.0-3.0 mg of total protein lysate

IHC 1:2000-1:8000

Applications

Tested Applications:

WB, IP, IHC, ELISA

Cited Applications:

WB, IHC

Species Specificity:

human, mouse, rat

Cited Species:

human, mouse

Positive Controls:

WB : A375 cells, HeLa cells, PC-3 cells

IP : HeLa cells,

IHC : human urothelial carcinoma tissue,

Note-IHC: suggested antigen retrieval with TE buffer pH 9.0; (*) Alternatively, antigen retrieval may be performed with citrate buffer pH 6.0

Notable Publications

Author	Pubmed ID	Journal	Application
Jeremy A Whitson	28951044	Free Radic Biol Med	WB
Yunyi Huang	36367442	J Oral Pathol Med	WB
David C Hondius	33492460	Acta Neuropathol	IHC

Storage

Storage:

Store at -20°C. Stable for one year after shipment.

Storage Buffer:

PBS with 0.02% sodium azide and 50% glycerol pH 7.3.

Aliquoting is unnecessary for -20°C storage

*** 20ul sizes contain 0.1% BSA

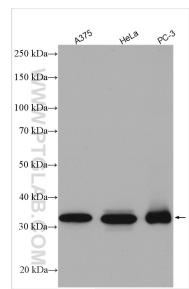
For technical support and original validation data for this product please contact:

T: 1 (888) 4PTGLAB (1-888-478-4522) (toll free in USA), or 1(312) 455-8498 (outside USA)

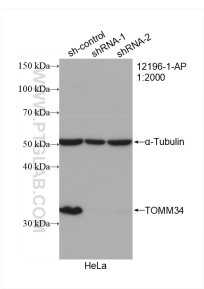
E: proteintech@ptglab.com
W: ptglab.com

This product is exclusively available under Proteintech Group brand and is not available to purchase from any other manufacturer.

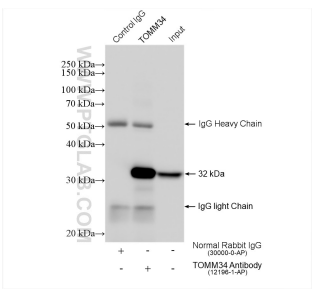
Selected Validation Data



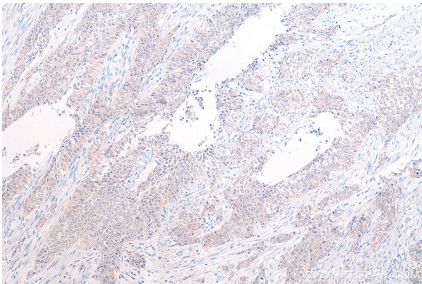
Various lysates were subjected to SDS PAGE followed by western blot with 12196-1-AP (TOMM34 antibody) at dilution of 1:1000 incubated at room temperature for 1.5 hours.



WB result of TOMM34 antibody (12196-1-AP; 1:2000; incubated at room temperature for 1.5 hours) with sh-Control and sh-TOMM34 transfected HeLa cells.



IP result of anti-TOMM34 (IP:12196-1-AP, 4ug; Detection:12196-1-AP 1:2000) with HeLa cells lysate 1320 ug.



Immunohistochemical analysis of paraffin-embedded human urothelial carcinoma tissue slide using 12196-1-AP (TOMM34 antibody) at dilution of 1:4000 (under 10x lens). Heat mediated antigen retrieval with Tris-EDTA buffer (pH 9.0).