

## WWP2 Polyclonal antibody

Catalog Number: 12197-1-AP

Featured Product

14 Publications

## Basic Information

## Catalog Number:

12197-1-AP

## Size:

150ul, Concentration: 800 µg/ml by Nanodrop;

## Source:

Rabbit

## Isotype:

IgG

## Immunogen Catalog Number:

AG2835

## GenBank Accession Number:

BC013645

## GeneID (NCBI):

11060

## Full Name:

WW domain containing E3 ubiquitin protein ligase 2

## Calculated MW:

870 aa, 99 kDa

## Observed MW:

110-115 kDa

## Purification Method:

Antigen affinity purification

## Recommended Dilutions:

WB 1:500-1:1000

IP 0.5-4.0 µg for IP and 1:500-1:2000

for WB

IHC 1:20-1:200

## Applications

## Tested Applications:

IHC, IP, WB, ELISA

## Cited Applications:

CoIP, IF, IHC, IP, WB

## Species Specificity:

human, mouse, rat

## Cited Species:

human, mouse

**Note-IHC: suggested antigen retrieval with TE buffer pH 9.0; (\*) Alternatively, antigen retrieval may be performed with citrate buffer pH 6.0**

## Positive Controls:

WB: mouse liver tissue, HepG2 cells, A549 cells

IP: A549 cells,

IHC: human pancreas cancer tissue,

## Background Information

WWP2(WW domain-containing protein 2) is also named as AIP2 and belongs to the NEDD4-like protein family. It functions as an E3 ubiquitin ligase for PTEN that plays a vital role in tumour-cell survival and is also involved in regulating transcription, embryonic stem-cell fate, cellular transport and T-cell activation processes(PMID:21532586). WWP2, which specifically interacted with ES cell-specific transcription factor Oct-4 and promoted its ubiquitination both in vitro and in vivo, is a ubiquitously expressed protein and exists in both cytoplasmic and nuclear compartments in ES cells(PMID:15047715).

## Notable Publications

Author	Pubmed ID	Journal	Application
Jing Yan	36211818	Oxid Med Cell Longev	WB
Xinxin Lu	36257929	Cell Death Discov	WB, IF, IP
Mao-Xu Ge	31621893	Br J Pharmacol	WB

## Storage

## Storage:

Store at -20°C. Stable for one year after shipment.

## Storage Buffer:

PBS with 0.02% sodium azide and 50% glycerol pH 7.3.

Aliquoting is unnecessary for -20°C storage

\*\*\* 20ul sizes contain 0.1% BSA

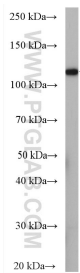
For technical support and original validation data for this product please contact:

T: 1 (888) 4PTGLAB (1-888-478-4522) (toll free in USA), or 1(312) 455-8498 (outside USA)

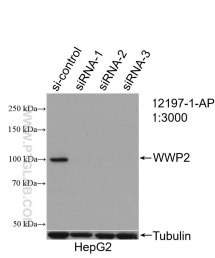
E: [proteintech@ptglab.com](mailto:proteintech@ptglab.com)  
W: [ptglab.com](http://ptglab.com)

This product is exclusively available under Proteintech Group brand and is not available to purchase from any other manufacturer.

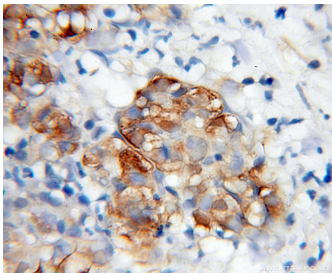
Selected Validation Data



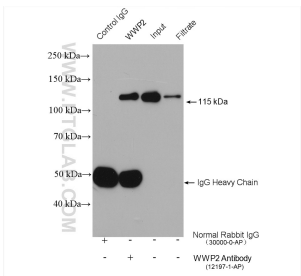
mouse liver tissue were subjected to SDS PAGE followed by western blot with 12197-1-AP (WWP2 antibody) at dilution of 1:500 incubated at room temperature for 1.5 hours.



WB result of WWP2 antibody (12197-1-AP; 1:3000; incubated at room temperature for 1.5 hours) with sh-Control and sh-WWP2 transfected HepG2 cells.



Immunohistochemical analysis of paraffin-embedded human pancreas cancer using 12197-1-AP (WWP2 antibody) at dilution of 1:100 (under 40x lens).



IP result of anti-WWP2 (IP:12197-1-AP, 4ug; Detection:12197-1-AP 1:1000) with A549 cells lysate 800 ug.