

For Research Use Only

CTRP1 Polyclonal antibody

Catalog Number: 12209-1-AP

Featured Product

3 Publications



Basic Information

Catalog Number:

12209-1-AP

Size:

150ul, Concentration: 200 µg/ml by Nanodrop and 133 µg/ml by Bradford method using BSA as the standard;

Source:

Rabbit

Isotype:

IgG

Immunogen Catalog Number:

AG2854

GenBank Accession Number:

BC021553

GeneID (NCBI):

114897

UNIPROT ID:

Q9BXQ1

Full Name:

C1q and tumor necrosis factor related protein 1

Calculated MW:

281 aa, 32 kDa

Observed MW:

35 kDa

Purification Method:

Antigen affinity purification

Recommended Dilutions:

WB 1:500-1:3000

IHC 1:20-1:200

IF 1:10-1:100

Applications

Tested Applications:

IF, IHC, WB, ELISA

Cited Applications:

IHC, WB

Species Specificity:

human

Cited Species:

human, rat

Positive Controls:

WB : human testis tissue, J774A.1 cells, RAW 264.7 cells

IHC : human prostate cancer tissue, human placenta tissue

IF : HepG2 cells,

Note-IHC: suggested antigen retrieval with TE buffer pH 9.0; (*) Alternatively, antigen retrieval may be performed with citrate buffer pH 6.0

Background Information

C1q and tumor necrosis factor related protein 1 (CTRP1), also known as C1QTNF1, is a member of the CTRP superfamily. CTRP1 is a secreted glycoprotein synthesized by a variety of tissues and cells, such as adipose tissue and macrophages. CTRP1 is a paralog of adiponectin. CTRP1 plays a critical role in regulating inflammation and lipid metabolism and acts as a targeted treatment for atherosclerosis, heart failure, hypertension, NAFLD, and diabetes mellitus (PMID: 36812667).

Notable Publications

Author	Pubmed ID	Journal	Application
Huizhi Fei	34422821	Front Cell Dev Biol	WB
Liyen Chen	31183364	Biomed Res Int	WB
Jiechuan Qiu	37529377	Front Mol Biosci	IHC

Storage

Storage:

Store at -20°C. Stable for one year after shipment.

Storage Buffer:

PBS with 0.02% sodium azide and 50% glycerol pH 7.3.

Aliquoting is unnecessary for -20°C storage

*** 20ul sizes contain 0.1% BSA

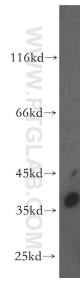
For technical support and original validation data for this product please contact:

T: 1 (888) 4PTGLAB (1-888-478-4522) (toll free in USA), or 1(312) 455-8498 (outside USA)

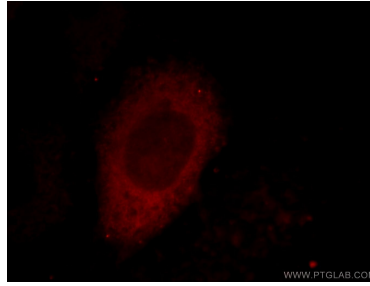
E: proteintech@ptglab.com
W: ptglab.com

This product is exclusively available under Proteintech Group brand and is not available to purchase from any other manufacturer.

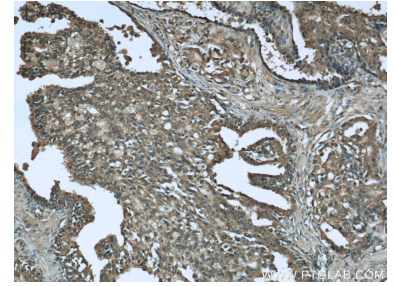
Selected Validation Data



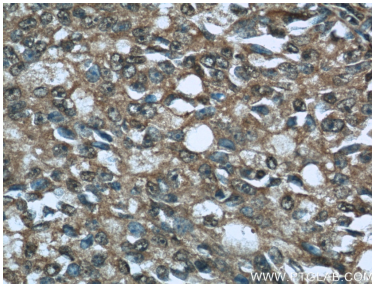
human testis tissue were subjected to SDS PAGE followed by western blot with 12209-1-AP (CTRP1 antibody) at dilution of 1:500 incubated at room temperature for 1.5 hours.



Immunofluorescent analysis of HepG2 cells, using C1QTNF1 antibody 12209-1-AP at 1:25 dilution and Rhodamine-labeled goat anti-rabbit IgG (red).



Immunohistochemical analysis of paraffin-embedded human prostate cancer tissue slide using 12209-1-AP (CTRP1 antibody at dilution of 1:50 (under 10x lens).



Immunohistochemical analysis of paraffin-embedded human prostate cancer tissue slide using 12209-1-AP (CTRP1 antibody at dilution of 1:50 (under 40x lens).