

For Research Use Only

SH3BGRL3 Polyclonal antibody

Catalog Number: 12210-1-AP

1 Publications



Basic Information

Catalog Number:

12210-1-AP

Size:

150ul, Concentration: 900 ug/ml by Nanodrop;

Source:

Rabbit

Isotype:

IgG

Immunogen Catalog Number:

AG2857

GenBank Accession Number:

BC030135

GeneID (NCBI):

83442

UNIPROT ID:

Q9H299

Full Name:

SH3 domain binding glutamic acid-rich protein like 3

Calculated MW:

93 aa, 10 kDa

Observed MW:

10 kDa

Purification Method:

Antigen affinity purification

Recommended Dilutions:

WB 1:500-1:2000

IHC 1:400-1:1600

Applications

Tested Applications:

WB, IHC, ELISA

Cited Applications:

WB

Species Specificity:

human, mouse, rat

Cited Species:

human

Positive Controls:

WB : PC-3 cells, U-251 cells

IHC : human stomach cancer tissue,

Note-IHC: suggested antigen retrieval with TE buffer pH 9.0; (*) Alternatively, antigen retrieval may be performed with citrate buffer pH 6.0

Background Information

SH3BGRL3, SH3 domain-binding glutamic acid-rich-like protein, could act as a modulator of glutaredoxin biological activity. It may play a role in cytoskeleton organization (PMID: 34380438). SH3BGRL3 acts as a potential prognostic biomarker for urothelial carcinoma and a novel binding partner of epidermal growth factor receptor (PMID: 26286913).

Notable Publications

Author	Pubmed ID	Journal	Application
Kathleen W Clancy	28485572	ACS Chem Biol	WB

Storage

Storage:

Store at -20°C. Stable for one year after shipment.

Storage Buffer:

PBS with 0.02% sodium azide and 50% glycerol pH 7.3.

Aliquoting is unnecessary for -20°C storage

*** 20ul sizes contain 0.1% BSA

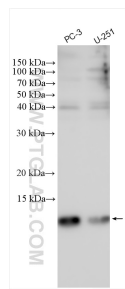
For technical support and original validation data for this product please contact:

T: 1 (888) 4PTGLAB (1-888-478-4522) (toll free in USA), or 1(312) 455-8498 (outside USA)

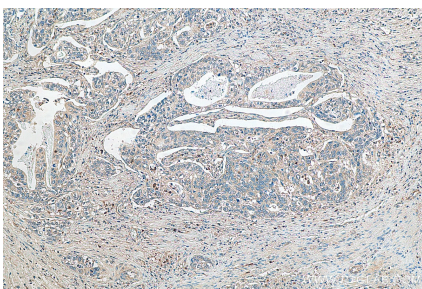
E: proteintech@ptglab.com
W: ptglab.com

This product is exclusively available under Proteintech Group brand and is not available to purchase from any other manufacturer.

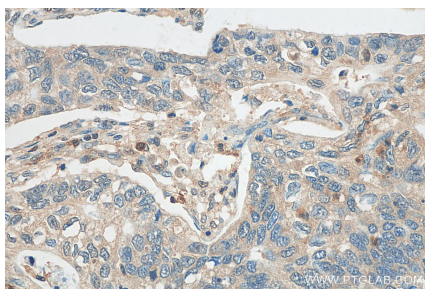
Selected Validation Data



Various lysates were subjected to SDS PAGE followed by western blot with 12210-1-AP (SH3BGRL3 antibody) at dilution of 1:1000 incubated at room temperature for 1.5 hours.



Immunohistochemical analysis of paraffin-embedded human stomach cancer tissue slide using 12210-1-AP (SH3BGRL3 antibody) at dilution of 1:800 (under 10x lens). Heat mediated antigen retrieval with Tris-EDTA buffer (pH 9.0).



Immunohistochemical analysis of paraffin-embedded human stomach cancer tissue slide using 12210-1-AP (SH3BGRL3 antibody) at dilution of 1:800 (under 40x lens). Heat mediated antigen retrieval with Tris-EDTA buffer (pH 9.0).