

For Research Use Only

Cathepsin B Polyclonal antibody

Catalog Number: 12216-1-AP

Featured Product

70 Publications



Basic Information

Catalog Number:

12216-1-AP

Size:

150ul, Concentration: 600 ug/ml by Nanodrop;

Source:

Rabbit

Isotype:

IgG

Immunogen Catalog Number:

AG2898

GenBank Accession Number:

BC010240

GeneID (NCBI):

1508

UNIPROT ID:

P07858

Full Name:

cathepsin B

Calculated MW:

339 aa, 38 kDa

Observed MW:

25 kDa, 31 kDa, 43 kDa

Purification Method:

Antigen affinity purification

Recommended Dilutions:

WB 1:1000-1:4000

IHC 1:50-1:500

IF/ICC 1:200-1:800

Applications

Tested Applications:

WB, IHC, IF/ICC, FC (Intra), ELISA

Cited Applications:

WB, IHC, IF

Species Specificity:

human

Cited Species:

human, mouse, rat, pig, bovine, frog

Note-IHC: suggested antigen retrieval with TE buffer pH 9.0; (*) Alternatively, antigen retrieval may be performed with citrate buffer pH 6.0

Positive Controls:

WB : A375 cells, HepG2 cells, HT-1080 cells

IHC : human ovary tumor tissue, human breast cancer tissue

IF/ICC : A375 cells,

Background Information

CTSB(Cathepsin B) is also named as CPSB and belongs to the peptidase C1 family. It participates in intracellular degradation and turnover of proteins. Cathepsin B precursors found in human malignant ascites fluid do not possess mannose-rich carbohydrates suggesting that a defect in the post translational processing of carbohydrate moieties on tumor. Cathepsin B exists as both glycosylated and unglycosylated forms(PMID:1637335). In rat macrophages and hepatocytes pro- cathepsin B is 39 kDa (unglycosylated=35 kDa), whereas in human fibroblasts procathepsin B is 44.5-46kDa (unglycosylated=39kDa)(PMID:2097084). It can be detected the 43 kDa form of pro-CTSB, 31 kDa and 25 kDa mature forms in mouse brain by western blot(PMID:20616152).

Notable Publications

Author	Pubmed ID	Journal	Application
Yong Fan	34560177	Food Chem Toxicol	WB
Haiyu Zhang	36114804	Phytother Res	WB
Ling Liu	35999725	J Hazard Mater	IF

Storage

Storage:

Store at -20°C. Stable for one year after shipment.

Storage Buffer:

PBS with 0.02% sodium azide and 50% glycerol pH 7.3.

Aliquoting is unnecessary for -20°C storage

*** 20ul sizes contain 0.1% BSA

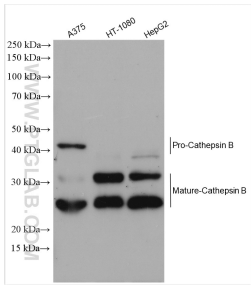
For technical support and original validation data for this product please contact:

T: 1 (888) 4PTGLAB (1-888-478-4522) (toll free in USA), or 1(312) 455-8498 (outside USA)

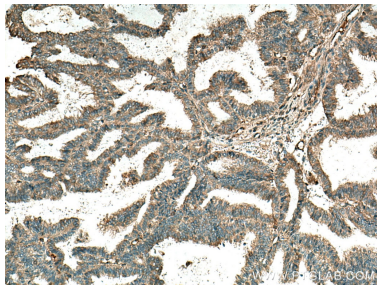
E: proteintech@ptglab.com
W: ptglab.com

This product is exclusively available under Proteintech Group brand and is not available to purchase from any other manufacturer.

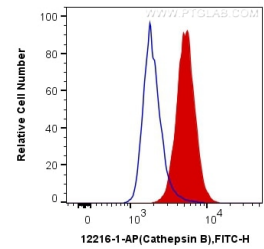
Selected Validation Data



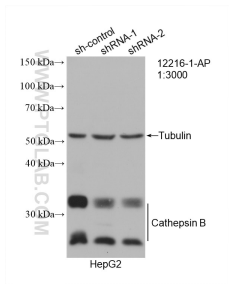
Various lysates were subjected to SDS PAGE followed by western blot with 12216-1-AP (Cathepsin B antibody) at dilution of 1:2000 incubated at room temperature for 1.5 hours.



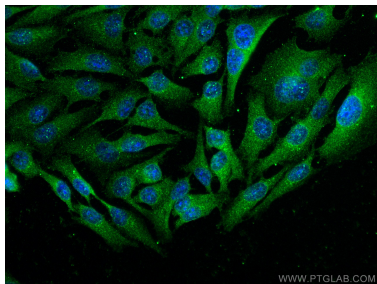
Immunohistochemical analysis of paraffin-embedded human ovary tumor tissue slide using 12216-1-AP (Cathepsin B antibody) at dilution of 1:200 (under 10x lens). Heat mediated antigen retrieval with Tris-EDTA buffer (pH 9.0).



1X10⁶ MCF-7 cells were intracellularly stained with 0.2 ug Anti-Human Cathepsin B (12216-1-AP) and CoraLite®488-Conjugated AffiniPure Goat Anti-Rabbit IgG(H+L) at dilution 1:1000 (red), or 0.2 ug Control Antibody. Cells were fixed with 4% PFA and permeabilized with Flow Cytometry Perm Buffer (PF00011-C).



WB result of Cathepsin B antibody (12216-1-AP; 1:3000; incubated at room temperature for 1.5 hours) with sh-Control and sh-Cathepsin B transfected HepG2 cells.



Immunofluorescent analysis of (-20°C Ethanol) fixed A375 cells using Cathepsin B antibody (12216-1-AP) at dilution of 1:400 and CoraLite®488-Conjugated AffiniPure Goat Anti-Rabbit IgG(H+L).