

For Research Use Only

EIF4E2 Polyclonal antibody

Catalog Number: 12227-1-AP **4 Publications**



Basic Information

Catalog Number: 12227-1-AP	GenBank Accession Number: BC021690	Purification Method: Antigen affinity purification
Size: 150ul, Concentration: 600 µg/ml by Nanodrop and 220 µg/ml by Bradford method using BSA as the standard;	GeneID (NCBI): 9470	Recommended Dilutions: WB 1:500-1:1000 IP 0.5-4.0 ug for IP and 1:500-1:1000 for WB
Source: Rabbit	Full Name: eukaryotic translation initiation factor 4E family member 2	IHC 1:50-1:500
Isotype: IgG	Calculated MW: 245 aa, 28 kDa	
Immunogen Catalog Number: AG2864	Observed MW: 28 kDa	

Applications

Tested Applications: IHC, IP, WB, ELISA	Positive Controls: WB: HeLa cells, MCF-7 cells, mouse kidney tissue
Cited Applications: IHC, RIP, WB	IP: MCF-7 cells,
Species Specificity: human, mouse, rat	IHC: human breast cancer tissue,
Cited Species: human	

Note-IHC: suggested antigen retrieval with TE buffer pH 9.0; (*) Alternatively, antigen retrieval may be performed with citrate buffer pH 6.0

Background Information

Notable Publications

Author	Pubmed ID	Journal	Application
Yoichiro Sugimoto	36097292	Nat Struct Mol Biol	WB
Limei Zou	35756894	iScience	WB
Hao Wang	37798282	Cell Death Dis	WB, RIP

Storage

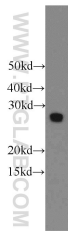
Storage:
Store at -20°C. Stable for one year after shipment.
Storage Buffer:
PBS with 0.02% sodium azide and 50% glycerol pH 7.3.
Aliquoting is unnecessary for -20°C storage

*** 20ul sizes contain 0.1% BSA

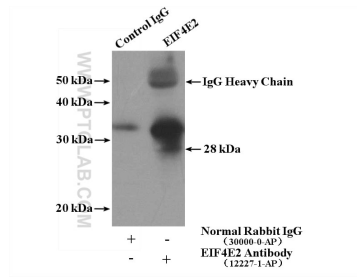
For technical support and original validation data for this product please contact:
T: 1 (888) 4PTGLAB (1-888-478-4522) (toll free in USA), or 1(312) 455-8498 (outside USA)
E: proteintech@ptglab.com
W: ptglab.com

This product is exclusively available under Proteintech Group brand and is not available to purchase from any other manufacturer.

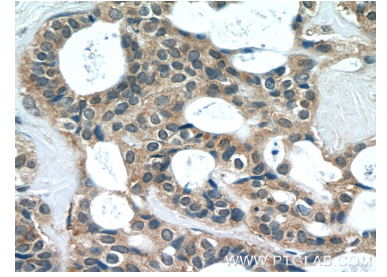
Selected Validation Data



HeLa cells were subjected to SDS PAGE followed by western blot with 12227-1-AP (EIF4E2 antibody) at dilution of 1:500 incubated at room temperature for 1.5 hours.



IP Result of anti-EIF4E2 (IP:12227-1-AP, 4ug; Detection:12227-1-AP 1:500) with MCF-7 cells lysate 1280ug.



Immunohistochemical analysis of paraffin-embedded human breast cancer tissue slide using 12227-1-AP (EIF4E2 Antibody) at dilution of 1:50 (under 40x lens).