

For Research Use Only

PRKACB Polyclonal antibody

Catalog Number: 12232-1-AP **6 Publications**



Basic Information

Catalog Number: 12232-1-AP	GenBank Accession Number: BC016285	Purification Method: Antigen affinity purification
Size: 150ul, Concentration: 550 µg/ml by Nanodrop and 333 µg/ml by Bradford method using BSA as the standard;	GeneID (NCBI): 5567	Recommended Dilutions: WB 1:500-1:1000 IP 0.5-4.0 ug for IP and 1:500-1:1000 for WB
Source: Rabbit	Full Name: protein kinase, cAMP-dependent, catalytic, beta	IHC 1:50-1:500
Isotype: IgG	Calculated MW: 41 kDa, 46 kDa	IF 1:50-1:500
Immunogen Catalog Number: AG2870	Observed MW: 36-55 kDa	

Applications

Tested Applications:
IF, IHC, IP, WB, ELISA

Cited Applications:
IF, IHC, IP, WB

Species Specificity:
human, mouse, rat

Cited Species:
human, rat, mouse

Note-IHC: suggested antigen retrieval with TE buffer pH 9.0; (*) Alternatively, antigen retrieval may be performed with citrate buffer pH 6.0

Positive Controls:

WB: MCF-7 cells, A549 cells, HT-1080 cells, mouse brain tissue, mouse heart tissue, PC-3 cells

IP: mouse brain tissue,

IHC: mouse brain tissue, human medulloblastoma tissue

IF: HeLa cells,

Background Information

PRKACB, also named as PKA C-beta, belongs to the protein kinase superfamily. AGC Ser/Thr protein kinase family and cAMP subfamily. It mediates cAMP-dependent signaling triggered by receptor binding to GPCRs. PKA activation regulates diverse cellular processes such as cell proliferation, the cell cycle, differentiation and regulation of microtubule dynamics, chromatin condensation and decondensation, nuclear envelope disassembly and reassembly, as well as regulation of intracellular transport mechanisms and ion flux.

Notable Publications

Author	Pubmed ID	Journal	Application
Yang Fu	35658231	Biomed Pharmacother	WB
Yongxia Wang	31998791	Biomed Res Int	WB
Fan Wu	36012545	Int J Mol Sci	WB

Storage

Storage:

Store at -20°C. Stable for one year after shipment.

Storage Buffer:

PBS with 0.02% sodium azide and 50% glycerol pH 7.3.

Aliquoting is unnecessary for -20°C storage

*** 20ul sizes contain 0.1% BSA

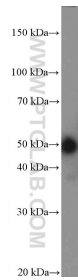
For technical support and original validation data for this product please contact:

T: 1 (888) 4PTGLAB (1-888-478-4522) (toll free in USA), or 1(312) 455-8498 (outside USA)

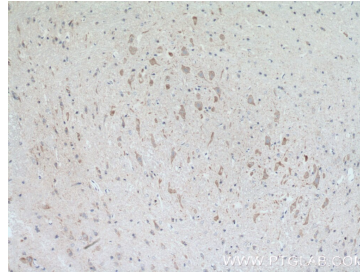
E: proteintech@ptglab.com
W: ptglab.com

This product is exclusively available under Proteintech Group brand and is not available to purchase from any other manufacturer.

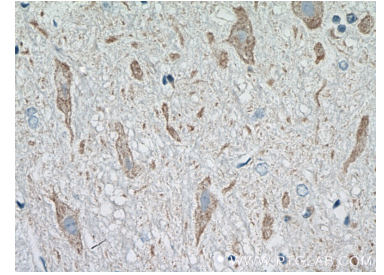
Selected Validation Data



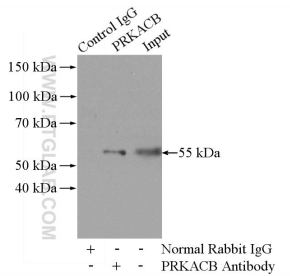
MCF-7 cells were subjected to SDS PAGE followed by western blot with 12232-1-AP (PRKACB Antibody) at dilution of 1:600 incubated at room temperature for 1.5 hours.



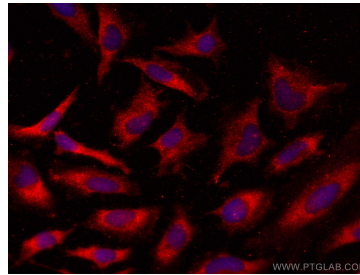
Immunohistochemical analysis of paraffin-embedded mouse brain tissue slide using 12232-1-AP (PRKACB antibody) at dilution of 1:200 (under 10x lens. Heat mediated antigen retrieval with Tris-EDTA buffer (pH 9.0).



Immunohistochemical analysis of paraffin-embedded mouse brain tissue slide using 12232-1-AP (PRKACB antibody) at dilution of 1:200 (under 40x lens. Heat mediated antigen retrieval with Tris-EDTA buffer (pH 9.0).



IP Result of anti-PRKACB (IP:12232-1-AP, 4 μ g; Detection:12232-1-AP 1:500) with mouse brain tissue lysate 2640 μ g.



Immunofluorescent analysis of (-20°C Ethanol) fixed HeLa cells using PRKACB antibody (12232-1-AP) at dilution of 1:200 and CoraLite®594-Conjugated AffiniPure Goat Anti-Rabbit IgG(H+L).