

For Research Use Only

CBY1 Polyclonal antibody

Catalog Number: 12239-1-AP **3 Publications**



Basic Information

Catalog Number: 12239-1-AP	GenBank Accession Number: BC016139	Purification Method: Antigen affinity purification
Size: 150ul , Concentration: 550 µg/ml by Nanodrop and 300 µg/ml by Bradford method using BSA as the standard;	GeneID (NCBI): 25776	Recommended Dilutions: WB 1:500-1:2000 IP 0.5-4.0 ug for 1.0-3.0 mg of total protein lysate IHC 1:20-1:200
Source: Rabbit	Full Name: chibby homolog 1 (Drosophila)	
Isotype: IgG	Calculated MW: 126 aa, 14 kDa	
Immunogen Catalog Number: AG2882	Observed MW: 30-35 kDa	

Applications

Tested Applications: IHC, IP, WB, ELISA	Positive Controls: WB : mouse liver tissue, mouse kidney tissue IP : mouse liver tissue, IHC : human kidney tissue, human heart tissue
Cited Applications: IF, IHC, WB	
Species Specificity: human, mouse, rat	
Cited Species: human, mouse	
Note-IHC: suggested antigen retrieval with TE buffer pH 9.0; (*) Alternatively, antigen retrieval may be performed with citrate buffer pH 6.0	

Background Information

Notable Publications

Author	Pubmed ID	Journal	Application
Michael C Burke	25313408	J Cell Biol	WB
Lilong Guo	33811421	Dev Dyn	WB, IF
Gang Ren	37986347	Medicine (Baltimore)	IHC

Storage

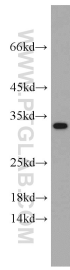
Storage:
Store at -20°C. Stable for one year after shipment.
Storage Buffer:
PBS with 0.02% sodium azide and 50% glycerol pH 7.3.
Aliquoting is unnecessary for -20°C storage

*** 20ul sizes contain 0.1% BSA

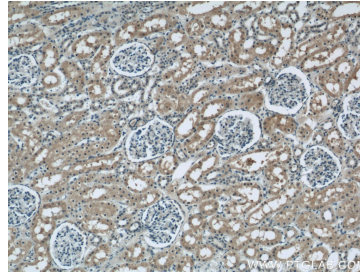
For technical support and original validation data for this product please contact:
T: 1 (888) 4PTGLAB (1-888-478-4522) (toll free in USA), or 1(312) 455-8498 (outside USA)
E: proteintech@ptglab.com
W: ptglab.com

This product is exclusively available under Proteintech Group brand and is not available to purchase from any other manufacturer.

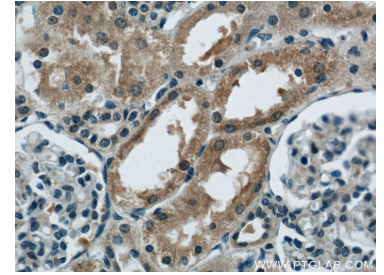
Selected Validation Data



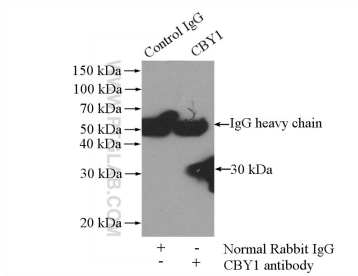
mouse liver tissue were subjected to SDS PAGE followed by western blot with 12239-1-AP (CBY1 antibody) at dilution of 1:500 incubated at room temperature for 1.5 hours.



Immunohistochemical analysis of paraffin-embedded human kidney using 12239-1-AP (CBY1 antibody) at dilution of 1:50 (under 10x lens).



Immunohistochemical analysis of paraffin-embedded human kidney using 12239-1-AP (CBY1 antibody) at dilution of 1:50 (under 40x lens).



IP Result of anti-CBY1 (IP:12239-1-AP, 4ug; Detection:12239-1-AP 1:500) with mouse liver tissue lysate 4000ug.