

For Research Use Only

SLC12A8 Polyclonal antibody

Catalog Number: 12242-1-AP



Basic Information

Catalog Number:

12242-1-AP

Size:

150ul, Concentration: 180 ug/ml by Nanodrop and 180 ug/ml by Bradford method using BSA as the standard;

Source:

Rabbit

Isotype:

IgG

Immunogen Catalog Number:

AG2886

GenBank Accession Number:

BC020506

GeneID (NCBI):

84561

UNIPROT ID:

A0AV02

Full Name:

solute carrier family 12 (potassium/chloride transporters), member 8

Calculated MW:

714 aa, 80 kDa

Observed MW:

70 kDa

Purification Method:

Antigen affinity purification

Recommended Dilutions:

WB 1:500-1:1000

Applications

Tested Applications:

WB, ELISA

Species Specificity:

human, mouse

Positive Controls:

WB: 37°C incubated mouse kidney tissue,

Background Information

Solute carrier family 12 member 8 (SLC12A8) belongs to the SLC12 gene family, which consists of electroneutral cation-chloride coupled cotransporters. It is highly expressed in small intestine and pancreas and moderately expressed in liver and white adipose tissue (PMID: 31131364). SLC12A8 may be a useful biomarker for the early diagnosis and treatment of bladder cancer (PMID: 33364434).

Storage

Storage:

Store at -20°C. Stable for one year after shipment.

Storage Buffer:

PBS with 0.02% sodium azide and 50% glycerol pH 7.3.

Aliquoting is unnecessary for -20°C storage

*** 20ul sizes contain 0.1% BSA

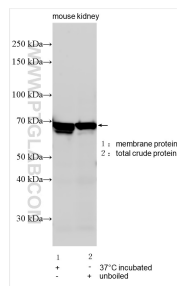
For technical support and original validation data for this product please contact:

T: 1 (888) 4PTGLAB (1-888-478-4522) (toll free in USA), or 1(312) 455-8498 (outside USA)

E: proteintech@ptglab.com
W: ptglab.com

This product is exclusively available under Proteintech Group brand and is not available to purchase from any other manufacturer.

Selected Validation Data



Various lysates were subjected to SDS PAGE followed by western blot with 12242-1-AP (SLC12A8 antibody) at dilution of 1:500 incubated at room temperature for 1.5 hours.