

For Research Use Only

# NELF Polyclonal antibody

Catalog Number: 12244-1-AP



## Basic Information

<b>Catalog Number:</b> 12244-1-AP	<b>GenBank Accession Number:</b> BC016862	<b>Purification Method:</b> Antigen affinity purification
<b>Size:</b> 150ul , Concentration: 450 ug/ml by Nanodrop;	<b>GeneID (NCBI):</b> 26012	<b>Recommended Dilutions:</b> WB 1:500-1:2000
<b>Source:</b> Rabbit	<b>UNIPROT ID:</b> Q6X4W1	<b>IHC 1:20-1:200</b>
<b>Isotype:</b> IgG	<b>Full Name:</b> nasal embryonic LHRH factor	<b>IF/ICC 1:50-1:500</b>
<b>Immunogen Catalog Number:</b> AG2888	<b>Calculated MW:</b> 507 aa, 56 kDa	
	<b>Observed MW:</b> 54-60 kDa	

## Applications

<b>Tested Applications:</b> WB, IHC, IF/ICC, ELISA	<b>Positive Controls:</b>
<b>Species Specificity:</b> human, mouse, rat	<b>WB :</b> HeLa cells, human brain tissue, human colon tissue, mouse testis tissue
<b>Note-IHC: suggested antigen retrieval with TE buffer pH 9.0; (*) Alternatively, antigen retrieval may be performed with citrate buffer pH 6.0</b>	<b>IHC :</b> human colon cancer tissue,
	<b>IF/ICC :</b> HeLa cells,

## Background Information

NSMF, also named as NELF (Nasal embryonic LHRH factor), couples NMDA-sensitive glutamate receptor signaling to the nucleus and triggers long-lasting changes in the cytoarchitecture of dendrites and spine synapse processes. NSMF has some isoforms with MW 44 kDa and 55-60 kDa. This antibody recognizes all the isoforms.

## Storage

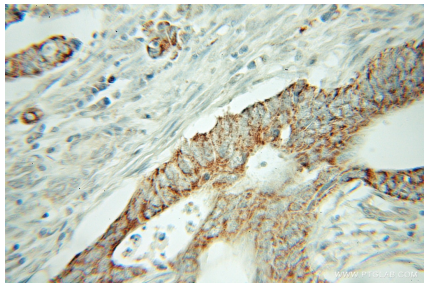
**Storage:**  
Store at -20°C. Stable for one year after shipment.  
**Storage Buffer:**  
PBS with 0.02% sodium azide and 50% glycerol pH 7.3.  
**Aliquoting is unnecessary for -20°C storage**

\*\*\* 20ul sizes contain 0.1% BSA

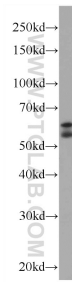
For technical support and original validation data for this product please contact:  
T: 1 (888) 4PTGLAB (1-888-478-4522) (toll free in USA), or 1(312) 455-8498 (outside USA)  
E: [proteintech@ptglab.com](mailto:proteintech@ptglab.com)  
W: [ptglab.com](http://ptglab.com)

This product is exclusively available under Proteintech Group brand and is not available to purchase from any other manufacturer.

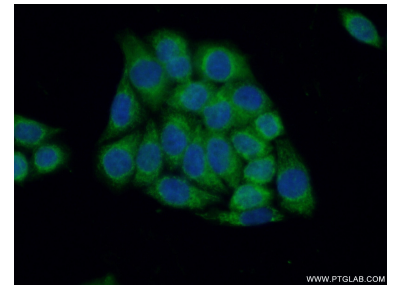
## Selected Validation Data



Immunohistochemical analysis of paraffin-embedded human colon cancer using 12244-1-AP (NELF antibody) at dilution of 1:100 (under 10x lens).



HeLa cells were subjected to SDS PAGE followed by western blot with 12244-1-AP (NELF Antibody) at dilution of 1:1000 incubated at room temperature for 1.5 hours.



Immunofluorescent analysis of (10% Formaldehyde) fixed HeLa cells using 12244-1-AP (NELF antibody) at dilution of 1:50 and Alexa Fluor 488-conjugated Goat Anti-Rabbit IgG(H+L).