

For Research Use Only

# CHURC1 Polyclonal antibody

Catalog Number: 12247-1-AP



## Basic Information

<b>Catalog Number:</b> 12247-1-AP	<b>GenBank Accession Number:</b> BC020550	<b>Purification Method:</b> Antigen affinity purification
<b>Size:</b> 150ul , Concentration: 147 µg/ml by Bradford method using BSA as the standard;	<b>GeneID (NCBI):</b> 91612	<b>Recommended Dilutions:</b> WB 1:200-1:1000 IHC 1:20-1:200
<b>Source:</b> Rabbit	<b>Full Name:</b> churchill domain containing 1	
<b>Isotype:</b> IgG	<b>Calculated MW:</b> 13 kDa	
<b>Immunogen Catalog Number:</b> AG2892	<b>Observed MW:</b> 13 kDa	

## Applications

<b>Tested Applications:</b> IHC, WB, ELISA	<b>Positive Controls:</b>
<b>Species Specificity:</b> human, mouse, rat	<b>WB :</b> mouse skin tissue, HeLa cells, mouse liver tissue, U-937 cells
<b>Note-IHC: suggested antigen retrieval with TE buffer pH 9.0; (*) Alternatively, antigen retrieval may be performed with citrate buffer pH 6.0</b>	<b>IHC :</b> human brain tissue, human gliomas tissue, human kidney tissue

## Background Information

CHURC1 (churchill domain containing 1), also known as C14orf52 or chch. The function of CHURC1 has not been widely studied, and is yet to be fully elucidated. It may be a transcriptional activator that mediates FGF signaling during neural development. The MW of this protein is 13 kDa, and Catalog#12247-1-AP specially recognises the 13 kDa protein.

## Storage

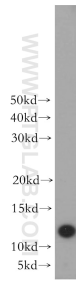
**Storage:**  
Store at -20°C. Stable for one year after shipment.  
**Storage Buffer:**  
PBS with 0.02% sodium azide and 50% glycerol pH 7.3.  
Aliquoting is unnecessary for -20°C storage

\*\*\* 20ul sizes contain 0.1% BSA

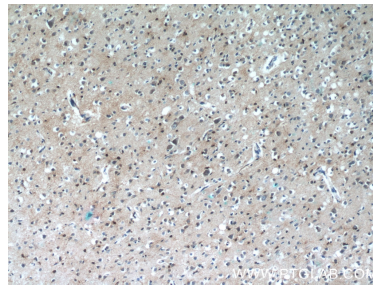
For technical support and original validation data for this product please contact:  
T: 1 (888) 4PTGLAB (1-888-478-4522) (toll free in USA), or 1(312) 455-8498 (outside USA)  
E: proteintech@ptglab.com  
W: ptglab.com

This product is exclusively available under Proteintech Group brand and is not available to purchase from any other manufacturer.

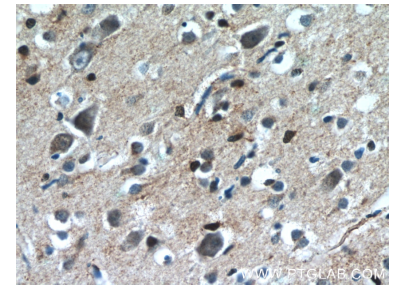
## Selected Validation Data



mouse skin tissue were subjected to SDS PAGE followed by western blot with 12247-1-AP (CHURC1 antibody) at dilution of 1:300 incubated at room temperature for 1.5 hours.



Immunohistochemical analysis of paraffin-embedded human brain tissue slide using 12247-1-AP (CHURC1 Antibody) at dilution of 1:50 (under 10x lens).



Immunohistochemical analysis of paraffin-embedded human brain tissue slide using 12247-1-AP (CHURC1 Antibody) at dilution of 1:50 (under 40x lens).