

For Research Use Only

Calpastatin Polyclonal antibody

Catalog Number: 12250-1-AP **4 Publications**



Basic Information

Catalog Number: 12250-1-AP	GenBank Accession Number: BC013579	Purification Method: Antigen affinity purification
Size: 150ul , Concentration: 500 µg/ml by Nanodrop;	GeneID (NCBI): 831	Recommended Dilutions: WB 1:2000-1:14000 IP 0.5-4.0 ug for IP and 1:500-1:2000 for WB
Source: Rabbit	Full Name: calpastatin	IHC 1:200-1:800
Isotype: IgG	Calculated MW: 667 aa, 72 kDa	IF 1:50-1:500
Immunogen Catalog Number: AG2897	Observed MW: 110 kDa	

Applications

Tested Applications: FC, IF, IHC, IP, WB, ELISA	Positive Controls:
Cited Applications: IF, WB	WB : HeLa cells, MCF-7 cells, K-562 cells
Species Specificity: human	IP : K-562 cells,
Cited Species: human, rat	IHC : human lung cancer tissue,
	IF : HeLa cells,
Note-IHC: suggested antigen retrieval with TE buffer pH 9.0; (*) Alternatively, antigen retrieval may be performed with citrate buffer pH 6.0	

Background Information

Notable Publications

Author	Pubmed ID	Journal	Application
Shuchao Wang	30240910	Ann Anat	WB,IF
Kang An	25357264	J Proteome Res	WB
Cheng-Wei Lu	33802221	Biomedicines	WB

Storage

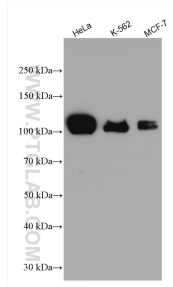
Storage:
Store at -20°C. Stable for one year after shipment.
Storage Buffer:
PBS with 0.02% sodium azide and 50% glycerol pH 7.3.
Aliquoting is unnecessary for -20°C storage

***** 20ul sizes contain 0.1% BSA**

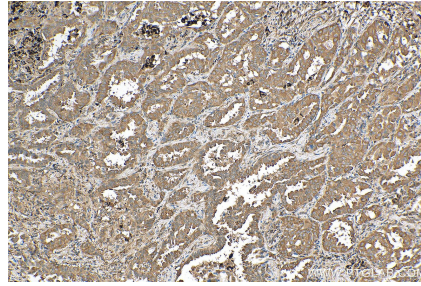
For technical support and original validation data for this product please contact:
T: 1 (888) 4PTGLAB (1-888-478-4522) (toll free in USA), or 1(312) 455-8498 (outside USA)
E: proteintech@ptglab.com
W: ptglab.com

This product is exclusively available under Proteintech Group brand and is not available to purchase from any other manufacturer.

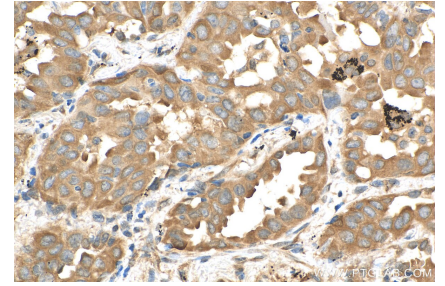
Selected Validation Data



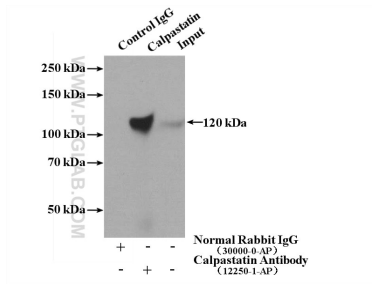
Various lysates were subjected to SDS PAGE followed by western blot with 12250-1-AP (Calpastatin antibody) at dilution of 1:7000 incubated at room temperature for 1.5 hours.



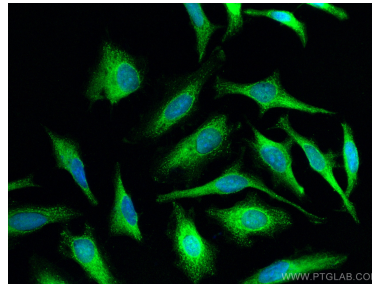
Immunohistochemical analysis of paraffin-embedded human lung cancer tissue slide using 12250-1-AP (Calpastatin antibody) at dilution of 1:400 (under 10x lens). Heat mediated antigen retrieval with Tris-EDTA buffer (pH 9.0).



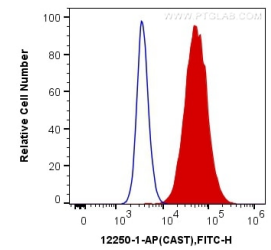
Immunohistochemical analysis of paraffin-embedded human lung cancer tissue slide using 12250-1-AP (Calpastatin antibody) at dilution of 1:400 (under 40x lens). Heat mediated antigen retrieval with Tris-EDTA buffer (pH 9.0).



IP Result of anti-Calpastatin (IP:12250-1-AP, 4ug; Detection:12250-1-AP 1:1000) with K-562 cells lysate 4000ug.



Immunofluorescent analysis of (-20°C Methanol) fixed HeLa cells using Calpastatin antibody (12250-1-AP) at dilution of 1:200 and CoraLite@488-Conjugated AffiniPure Goat Anti-Rabbit IgG(H+L).



1X10⁶ HeLa cells were intracellularly stained with 0.2 ug Anti-Human Calpastatin (12250-1-AP) and CoraLite@488-Conjugated AffiniPure Goat Anti-Rabbit IgG(H+L) at dilution 1:1000 (red), or 0.2 ug Control Antibody. Cells were fixed with 4% PFA and permeabilized with Flow Cytometry Perm Buffer (PF00011-C).