

For Research Use Only

MCM10 Polyclonal antibody

Catalog Number: 12251-1-AP

14 Publications



Basic Information

Catalog Number: 12251-1-AP	GenBank Accession Number: BC009108	Purification Method: Antigen affinity purification
Size: 150ul , Concentration: 350 µg/ml by Nanodrop;	GeneID (NCBI): 55388	Recommended Dilutions: WB 1:500-1:2000
Source: Rabbit	Full Name: minichromosome maintenance complex component 10	
Isotype: IgG	Calculated MW: 874 aa, 97 kDa	
Immunogen Catalog Number: AG2899	Observed MW: 97-105 kDa	

Applications

Tested Applications: WB, ELISA	Positive Controls: WB : Ramos cells,
Cited Applications: IF, WB	
Species Specificity: human, mouse	
Cited Species: human	

Background Information

MCM10, also named as HsMCM10, belongs to the MCM10 family. It acts as a replication initiation factor that brings together the MCM2-7 helicase and the DNA polymerase alpha/primase complex in order to initiate DNA replication. Additionally, it plays a role in preventing DNA damage during replication and is essential for the integrity of the RECQ4-MCM replicative helicase complex. It mediates RECQ4 association with MCM2-7 helicase complex during DNA replication.

Notable Publications

Author	Pubmed ID	Journal	Application
Xiaohua Xu	27587400	J Biol Chem	WB
Divya Achuthankutty	31615875	J Cell Biol	
Zhihua Kang	34645815	Nat Commun	WB

Storage

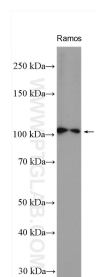
Storage:
Store at -20°C. Stable for one year after shipment.
Storage Buffer:
PBS with 0.02% sodium azide and 50% glycerol pH 7.3.
Aliquoting is unnecessary for -20°C storage

*** 20ul sizes contain 0.1% BSA

For technical support and original validation data for this product please contact:
T: 1 (888) 4PTGLAB (1-888-478-4522) (toll free in USA), or 1(312) 455-8498 (outside USA)
E: proteintech@ptglab.com
W: ptglab.com

This product is exclusively available under Proteintech Group brand and is not available to purchase from any other manufacturer.

Selected Validation Data



Ramos cells were subjected to SDS PAGE followed by western blot with 12251-1-AP (MCM10 antibody) at dilution of 1:1000 incubated at room temperature for 1.5 hours.