

For Research Use Only

MCM10 Polyclonal antibody, PBS Only

Catalog Number:12251-1-PBS



Basic Information

Catalog Number: 12251-1-PBS	GenBank Accession Number: BC009108	Purification Method: Antigen affinity purification
Size: 100ug , Concentration: 1 mg/ml by Nanodrop;	GeneID (NCBI): 55388	
Source: Rabbit	UNIPROT ID: Q7L590	
Isotype: IgG	Full Name: minichromosome maintenance complex component 10	
Immunogen Catalog Number: AG2899	Calculated MW: 874 aa, 97 kDa	
	Observed MW: 97-105 kDa	

Applications

Tested Applications:
WB, Indirect ELISA

Species Specificity:
human, mouse

Background Information

MCM10, also named as HsMCM10, belongs to the MCM10 family. It acts as a replication initiation factor that brings together the MCM2-7 helicase and the DNA polymerase alpha/primase complex in order to initiate DNA replication. Additionally, it plays a role in preventing DNA damage during replication and is essential for the integrity of the RECQ4-MCM replicative helicase complex. It mediates RECQ4 association with MCM2-7 helicase complex during DNA replication.

Storage

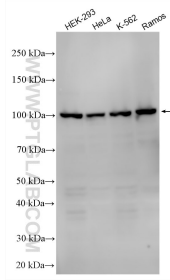
Storage:
Store at -80°C.

Storage Buffer:
PBS only, pH7.3

For technical support and original validation data for this product please contact:
T: 1 (888) 4PTGLAB (1-888-478-4522) (toll free in USA), or 1(312) 455-8498 (outside USA) E: proteintech@ptglab.com
W: ptglab.com

This product is exclusively available under Proteintech Group brand and is not available to purchase from any other manufacturer.

Selected Validation Data



Various lysates were subjected to SDS PAGE followed by western blot with 12251-1-AP (MCM10 antibody) at dilution of 1:2000 incubated at room temperature for 1.5 hours. This data was developed using the same antibody clone with 12251-1-PBS in a different storage buffer formulation.