

For Research Use Only

POLR1D Polyclonal antibody

Catalog Number: 12254-1-AP **1 Publications**



Basic Information

Catalog Number: 12254-1-AP	GenBank Accession Number: BC015319	Purification Method: Antigen affinity purification
Size: 150ul , Concentration: 650 µg/ml by Nanodrop and 320 µg/ml by Bradford method using BSA as the standard;	GeneID (NCBI): 51082	Recommended Dilutions: WB 1:500-1:2000 IP 0.5-4.0 ug for IP and 1:500-1:1000 for WB
Source: Rabbit	Full Name: polymerase (RNA) I polypeptide D, 16kDa	
Isotype: IgG	Calculated MW: 16 kDa	
Immunogen Catalog Number: AG2904	Observed MW: 20 kDa	

Applications

Tested Applications: IP, WB, ELISA	Positive Controls: WB : HeLa cells, Jurkat cells, mouse lung tissue
Cited Applications: WB	IP : HeLa cells,
Species Specificity: human, mouse, rat	
Cited Species: human	

Background Information

Notable Publications

Author	Pubmed ID	Journal	Application
Chandreyee Datta	36306353	Sci Adv	WB

Storage

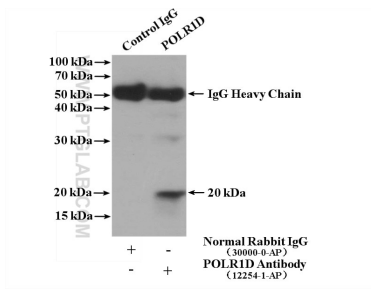
Storage:
Store at -20°C. Stable for one year after shipment.
Storage Buffer:
PBS with 0.02% sodium azide and 50% glycerol pH 7.3.
Aliquoting is unnecessary for -20°C storage

***** 20ul sizes contain 0.1% BSA**

For technical support and original validation data for this product please contact:
T: 1 (888) 4PTGLAB (1-888-478-4522) (toll free in USA), or 1(312) 455-8498 (outside USA)
E: proteintech@ptglab.com
W: ptglab.com

This product is exclusively available under Proteintech Group brand and is not available to purchase from any other manufacturer.

Selected Validation Data



IP result of anti-POLR1D (IP:12254-1-AP, 4 μ g;
Detection:12254-1-AP 1:500) with HeLa cells lysate
2600 μ g.



HeLa cells were subjected to SDS PAGE followed by
western blot with 12254-1-AP (POLR1D antibody) at
dilution of 1:500 incubated at room temperature for
1.5 hours.